



**AN EXEMPLARY DECORATIVE
ANTIQUÉ AND VINTAGE CARPET
COLLECTION BY NAZMIYAL**

Monday April 4, 2016
New York

Bonhams

NEW YORK

AN EXEMPLARY DECORATIVE ANTIQUE AND VINTAGE CARPET COLLECTION BY NAZMIYAL

Monday April 4, 2016 at 1pm

New York

BONHAMS

580 Madison Avenue
New York, New York 10022
bonhams.com

PREVIEW

Thursday March 31, 12pm to 5pm
Friday April 1, 12pm to 5pm
Saturday April 2, 12pm to 5pm
Sunday April 3, 12pm to 5pm

SALE NUMBER: 23749

Lots 1000 - 1167

CATALOG: \$35

BIDS

+1 (212) 644 9001
+1 (212) 644 9009 fax

To bid via the internet please visit
www.bonhams.com/23749

Please note that telephone bids must be submitted no later than 4pm on the day prior to the auction. New bidders must also provide proof of identity and address when submitting bids. Telephone bidding is only available for lots with a low estimate in excess of \$1000.

Please contact client services with any bidding inquiries.

Please see pages 162 to 168 for bidder information including Conditions of Sale, after-sale collection and shipment.

INQUIRIES

Hadji Rahimipour
Vice President, Director
+1 (415) 503 3392
hadji.rahimipour@bonhams.com

Kate Wollman, Business Manager
+1 (415) 503 3221
kate.wollman@bonhams.com

Automated Results Service
+1 (800) 223 2854

ILLUSTRATIONS

Front and back cover: Lot 1120
Session page: Lot 1151

A LETTER FROM HADJI RAHIMIPOUR

Here at Bonhams, we are very excited to be able to announce that on April 4th we will be hosting an unprecedented sale, *An Exemplary Decorative Antique and Vintage Carpet Collection by Nazmiyal*. This hand-picked and curated collection is comprised of some of the rarest carpets from an important and influential collection - the Nazmiyal Collection. During our auction, collectors, interior designers, dealers and consumers will be able to view, enjoy and vie for the chance to own some of the rarest and best examples in the world today.

This sale will highlight a rare 17th Century Persian Kerman vase carpet, a 16th century Ottoman Cairine carpet from Cairo, Egypt, and a late 19th Century Ziegler Sultanabad carpet formerly owned by Sigmund Freud. Other stand out pieces include works by world renowned artists and designers such as Roy Lichtenstein, Corneille, Ruhlmann, Leleu, Marta Maas and many more.

With this selection of rare and collectible 16th century pieces, decorative late 19th century rugs, period Art Decos and mid-century modern carpets, this auction is sure to attract a diverse and knowledgeable audience.

Since 1980, the Nazmiyal Collection in New York City, has been recognized as the premier antique rug collection and go-to source for rare and beautiful rugs and carpets from all over the world, spanning a variety of time periods.

Jason Nazmiyal, the founder of Nazmiyal Collection has over 30 years of experience in the antique rug business and his taste is well respected and admired by many of the biggest trend setters and collectors.



**AN EXEMPLARY DECORATIVE
ANTIQUE AND VINTAGE CARPET
COLLECTION BY NAZMIYAL**

Lots 1000-1167



1000
A KIRSHEHIR RUG
Turkey
18th century
size approximately 3ft. 7in. x 7ft. 7in.
\$3,000 - 6,000



1001
A SILK KAYSERI CARPET
Anatolia
circa 1920
size approximately 7ft. 1in. x 10ft. 2in.
\$3,000 - 5,000



1002
A SPANISH CARPET
Spain
circa 1940
size approximately 8ft. 8in. x 10ft. 10in.
\$5,000 - 10,000



1003
A SILK AND WOOL TABRIZ RUG SIGNED BY SHAHSAVARPOOR
Northwest Persia
third quarter 20th century
size approximately 4ft. 6in. x 6ft. 9in.
\$4,000 - 7,000



1004

A HADJI JALILI TABRIZ CARPET

Northwest Persia

circa 1900

size approximately 9ft. 6in. x 12ft. 9in.

\$8,000 - 12,000



1005

A TABRIZ CARPET

Northwest Persia

circa 1900

size approximately 7ft. x 9ft. 2in.

\$8,000 - 12,000



1006

A SULTANABAD CARPET

Central Persia

circa 1900

size approximately 8ft. 4in. x 10ft. 8in.

\$7,000 - 12,000



1007
A ZEIGLER SULTANABAD RUG
Central Persia
circa 1900
size approximately 4ft. 6in. x 4ft. 6in.
\$3,000 - 5,000



1008
A SULTANABAD CARPET
Central Persia
circa 1900
size approximately 11ft. x 13ft. 9in.
\$6,000 - 10,000



1009

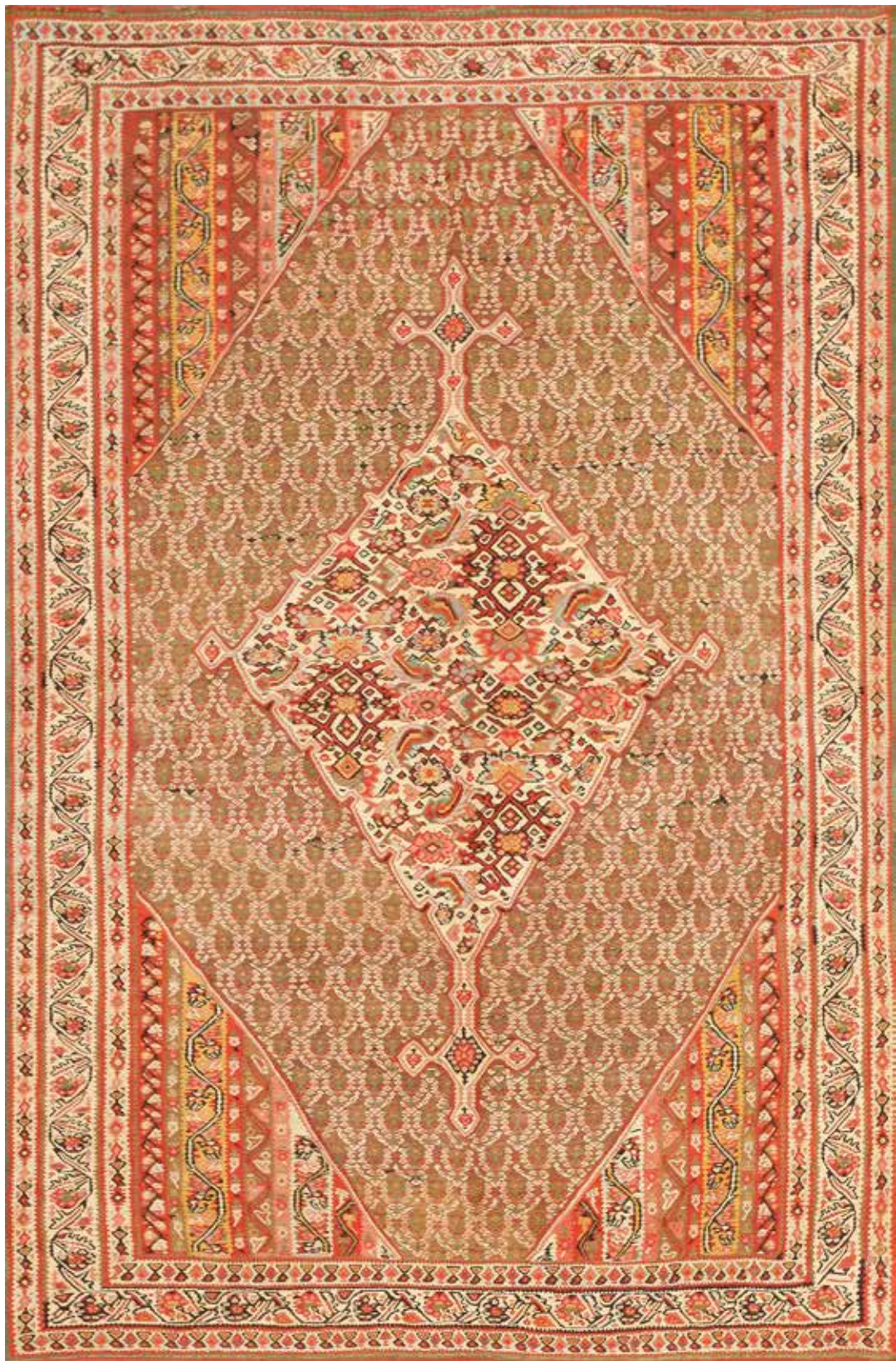
A FEREGHAN SAROUK CARPET

Central Persia

late 19th century

size approximately 9ft. 3in. x 12ft.

\$6,000 - 10,000



1010

A SENNEH KILIM

Central Persia

late 19th century

size approximately 4ft. 4in. x 7ft.

\$5,000 - 8,000



1011

A SERAPI CARPET

Northwest Persia

circa 1910

size approximately 8ft. 6in. x 11ft. 6in.

\$6,000 - 10,000



1012
A QASHQAI RUG
Southwest Persia
late 19th century
size approximately 5ft. 1in. x 7ft. 8in.
\$4,000 - 5,000



1013
A MAZANDARAN KILIM
Central Persia
mid 20th century
size approximately 8ft. x 13ft.
\$3,000 - 6,000



1014

A MALAYER CARPET

Central Persia

circa 1920

size approximately 7ft. 2in. x 13ft. 1in.

\$6,000 - 10,000



1015

A MALAYER RUNNER

Central Persia

circa 1900

size approximately 3ft. 3in. x 18ft. 4in.

\$6,000 - 10,000



1016
A KHORASAN CARPET
Northeast Persia
circa 1900
size approximately 9ft. 6in. x 11ft.
\$5,000 - 8,000



1017
A KHORASAN CARPET
Northeast Persia
circa 1920
size approximately 8ft. 7in. x 11ft. 5in.
\$4,000 - 6,000



1018

A MALAYER RUNNER

Central Persia

circa 1900

size approximately 3ft. 5in. x 15ft. 7in.

\$8,000 - 12,000



1019
A KHORASAN CARPET
Northeast Persia
circa 1920
size approximately 8ft. 8in. x 11ft.
\$3,000 - 5,000



1020
A HADJI JALILI TABRIZ CARPET
Northwest Persia
circa 1900
size approximately 6ft. 9in. x 10ft.
\$6,000 - 10,000



1021

A FEREGHAN SAROUK RUG

Central Persia

late 19th century

size approximately 4ft. 5in. x 6ft. 6in.

\$8,000 - 12,000



1022

A SILK MOHTASHAM KASHAN RUG

Central Persia

last quarter 19th century

size approximately 2ft. x 2ft. 8in.

\$5,000 - 8,000



1023

A KASHAN RUG

Central Persia

18th century

size approximately 4ft. x 7ft.

\$6,000 - 9,000



1024

A SERAPI CARPET

Northwest Persia

circa 1920

size approximately 9ft. 4in. x 12ft.

\$8,000 - 12,000



1025

A DABIR KASHAN CARPET

Central Persia

circa 1920

size approximately 9ft. 10in. x 13ft. 6in.

\$4,000 - 7,000



1026

A KHORASAN CARPET

Northeast Persia

circa 1920

size approximately 9ft. 6in. x 12ft. 11in.

\$6,000 - 10,000



1027
A TABRIZ CARPET
Northwest Persia
circa 1920
size approximately 9ft. x 12ft.
\$4,000 - 7,000



1028
A MAZANDARAN KILIM
Central Persia
mid 20th century
size approximately 8ft. 3in. x 13ft.
\$3,000 - 6,000



1029
A BIDJAR SAMPLER
Northwest Persia
late 19th century
size approximately 4ft. x 6ft. 7in.
\$4,000 - 7,000



1030
A BAKHTIARI CARPET
Southwest Persia
late 19th century
size approximately 12ft. 3in. x 18ft. 3in.
\$4,000 - 6,000



1031
A BIDJAR RUG
Northwest Persia
late 19th century
size approximately 4ft. 2in. x 7ft. 1in.
\$3,000 - 5,000



1032
AN AFSHAR RUG
Southwest Persia
late 19th century
size approximately 5ft. x 6ft. 7in.
\$5,000 - 8,000



1033

A MOON SHAWL

India

19th century

size approximately 5ft. 7in. x 5ft. 8in.

\$5,000 - 8,000



1034

AN AGRA CARPET

India

circa 1920

size approximately 12ft. 2in. x 15ft.

\$5,000 - 8,000



1035
AN AGRA RUG
India
circa 1920
size approximately 4ft. x 7ft.
\$3,000 - 5,000



1036
A KHOTAN CARPET
East Turkestan
circa 1900
size approximately 8ft. 5in. x 12ft.
\$5,000 - 8,000



1037

A KHOTAN LONG CARPET

East Turkestan

circa 1920

size approximately 6ft. 1in. x 12ft. 4in.

\$7,000 - 10,000



1038

A CHINESE ZODIAC RUG

China

circa 1890

size approximately 3ft. 4in. x 4ft. 1in.

\$2,000 - 4,000



1039

A PEKING CARPET

China

circa 1920

size approximately 12ft. x 15ft. 4in.

\$7,000 - 12,000



1040

A KHOTAN LONG CARPET

East Turkestan

circa 1920

size approximately 7ft. 2in. x 14ft. 2in.

\$6,000 - 10,000



1041

A PEKING RUG

China

late 19th century

size approximately 6ft. 3in. x 8ft. 6in.

\$5,000 - 9,000



1042
A KHOTAN CARPET
East Turkestan
circa 1940
size approximately 9ft. 6in. x 13ft. 1in.
\$2,000 - 3,000



1043
A BAKHTIARI CARPET
Southwest Persia
circa 1920
size approximately 11ft. 9in. x 18ft. 4in.
\$4,000 - 6,000



1044

A MOHTASHAM KASHAN RUG

Central Persia

circa 1900

size approximately 4ft. 8in. x 7ft.

\$6,000 - 10,000



1045

A SERAPI RUG

Northwest Persia

late 19th century

size approximately 5ft. 3in. x 6ft.

\$5,000 - 8,000



1046
A PEKING CARPET
China
circa 1890
size approximately 10ft. 3in. x 17ft. 4in.
\$4,000 - 6,000



1047
A KUBA RUG
Caucasus
late 19th century
size approximately 3ft. 4in. x 4ft. 7in.
\$3,000 - 5,000



1048
A KAZAK RUG
Caucasus
circa 1920
size approximately 5ft. x 8ft.
\$3,000 - 5,000



1049
A KUBA RUG
Caucasus
late 19th century
size approximately 3ft. 10in. x 6ft. 2in.
\$4,000 - 7,000



1050
A VERNEH RUG
Caucasus
late 19th century
size approximately 5ft. 2in. x 6ft. 4in.
\$2,000 - 4,000



1051
A SOUMAC RUG
Caucasus
20th century
size approximately 3ft. 7in. x 6ft.
\$3,000 - 5,000



1052

A DRAGON SOUMAC CARPET

Caucasus

late 19th century

size approximately 7ft. 7in. x 10ft.

\$8,000 - 12,000



1053

A SERAPI CARPET

Northwest Persia

circa 1920

size approximately 9ft. x 12ft. 8in.

\$6,000 - 10,000



1054
A SERAPI CARPET
Northwest Persia
circa 1900
size approximately 8ft. 6in. x 11ft. 5in.
\$5,000 - 8,000



1055
A ZEYCHOR RUG
Caucasus
early 20th century
size approximately 4ft. x 6ft.
\$4,000 - 6,000



1056

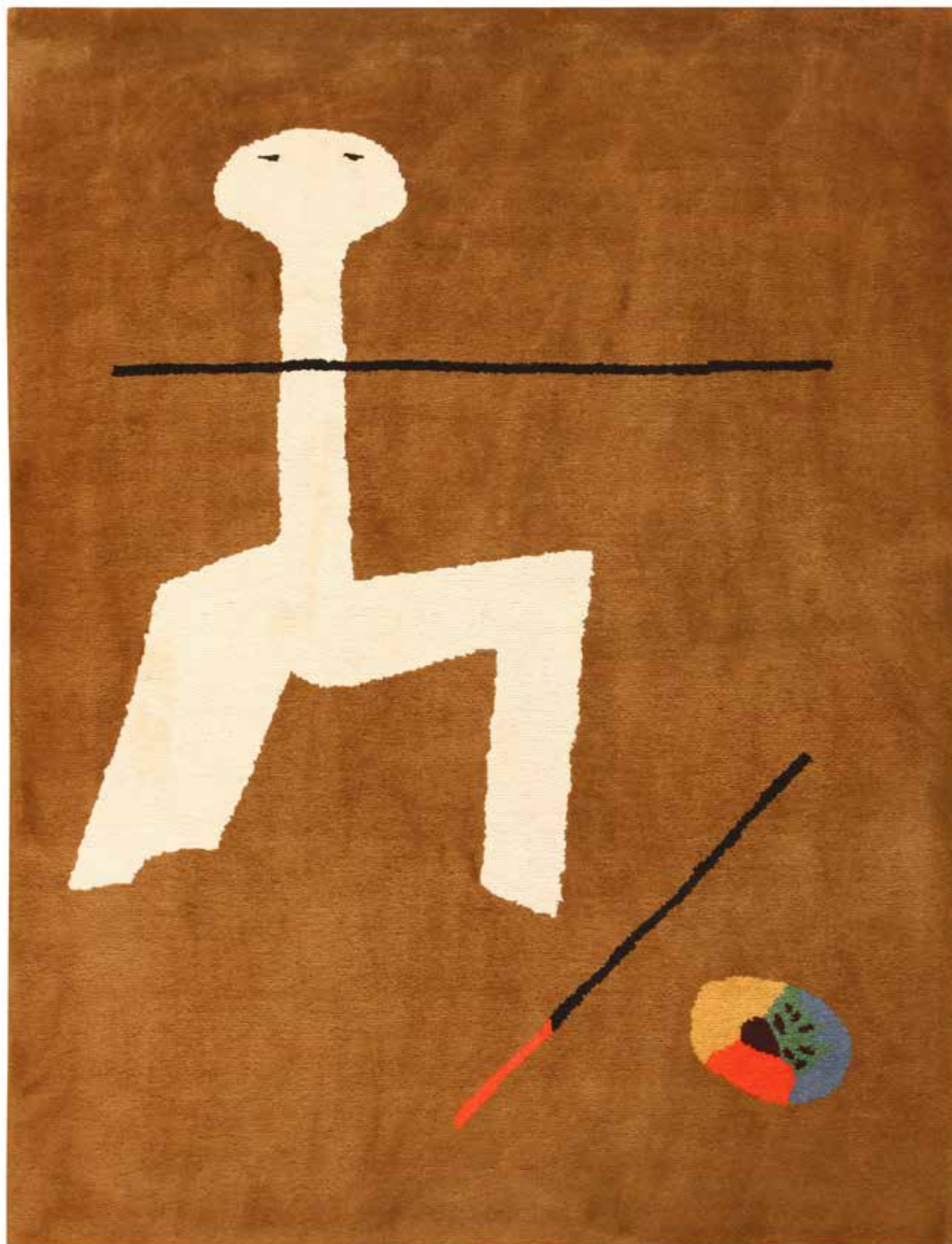
A KAITAG TAPESTER

Caucasus

18th century

size approximately 1ft. 8in. x 3ft. 9in.

\$5,000 - 8,000



1057

A FRENCH RUG BY JOAN MIRÓ

France

mid 20th century

size approximately 5ft. x 6ft. 6in.

\$6,000 - 10,000



1058

AN ECUADORIAN CARPET BY EDWARD GERBER, "DIFFERENT DANCERS"

Ecuador

mid 20th century

size approximately 8ft. x 10ft.

\$7,000 - 12,000



1059

AN ART DECO RUG BY EMILIO PUCCI

France

mid 20th century

size approximately 5ft. x 7ft.

\$6,000 - 10,000



1060

A TABRIZ CARPET

Northwest Persia

circa 1920

size approximately 9ft. 6in. x 13ft.

\$5,000 - 8,000



1061

A MOHTASHAM KASHAN RUG

Central Persia

late 19th century

size approximately 4ft. 3in. x 6ft. 9in.

\$8,000 - 10,000



1062
AN ANGORA OUSHAK RUG
West Anatolia
circa 1900
size approximately 3ft. 7in. x 5ft. 7in.
\$3,000 - 5,000



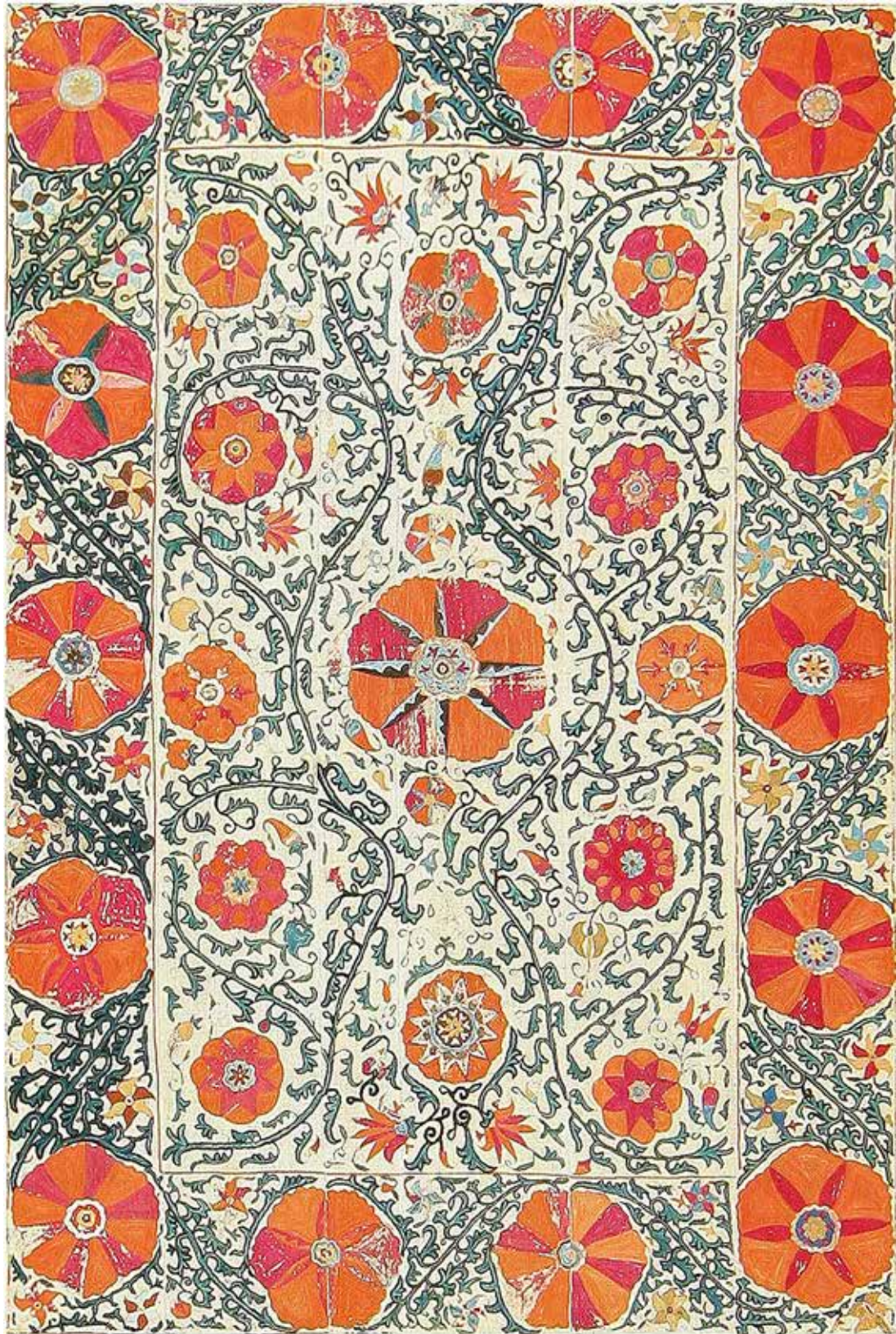
1063
A YASTIC RUG
Turkey
late 19th century
size approximately 2ft. 2in. x 3ft.
\$1,000 - 2,000



1064
A BESSARABIAN KILIM
Romania
 circa 1900
 size approximately 9ft. 9in. x 10ft. 5in.
 \$4,000 - 7,000



1065
A SUZANI TEXTILE
Uzbekistan
 late 19th century
 size approximately 3ft. 6in. x 5ft. 4in.
 \$5,000 - 8,000



1066

A SUZANI TEXTILE

Uzbekistan

late 19th century

size approximately 5ft. x 7ft. 3in.

\$7,000 - 10,000



1067

AN OUSHAK CARPET

West Anatolia

18th century

size approximately 10ft. 5in. x 15ft. 5in.

\$8,000 - 15,000



1068

A MELAS RUNNER

Southwest Turkey

circa 1900

size approximately 3ft. 2in. x 12ft. 11in.

\$3,000 - 5,000



1069

AN OUSHAK CARPET

West Anatolia

circa 1920

size approximately 8ft. 8in. x 12ft. 10in.

\$8,000 - 12,000

1070

A WOOL TAPESTRY BY ROY LICHTENSTEIN, "AMERIND LANDSCAPE"

India

mid 20th century

size approximately 12ft. x 9ft. 3in.

\$25,000 - 40,000

One of the first pop artists to find a national audience, Roy Lichtenstein (1923-1997) was acclaimed for creating art that was as controversial as it was bold. His large-scale masterpieces were an imposition of color and shape, influenced by a variety of artistic styles, from Impressionism to Cubism, Surrealism and Expressionism. Reflecting on the themes that became synonymous with his work, he noted ironically: "All abstract artists try to tell you that what they do comes from nature and I'm always trying to tell you that what I do is completely abstract."

Roy Lichtenstein's first solo art exhibition in 1962 elevated him to national prominence, a position he held throughout his distinguished career.

Lichtenstein's work was an ironic commentary on 'low art' forms that were culturally ubiquitous. Some of his most famous pieces represent cartoon images that utilize a Ben-Day dots technique, a printing method common in pulp comic books. Often, he would reconstruct a comic image in dots, emphasizing primary colors (red, yellow and blue). Then he would line the forms with heavy strokes of black. Lichtenstein also provided designs that would result in some truly exceptional rugs. He also played with space, using mirrors to create a sense of form outside the artistic frame. In one of his last series, he created home interiors that were inspired by yellow page ads from a telephone book.

Roy Lichtenstein's contributions to contemporary art continue to reverberate in the art world. Although his subject matter often mined the trivial, his engagement with the artifacts of social custom expanded our definition of art, making him one of the most relevant and important figures of the 20th Century.

Yellow dominates the larger frame, defining an eye and long yellow hair suggesting a female figure. Strong dark colors of black and blue accentuate the form on the left side suggestive of a male figure. Diagonal lines drawn within the primary figures on each side create the cartoon effects that are the signature of Lichtenstein's works.





1071
A WOOL TAPESTRY BY ROY LICHTENSTEIN
India
mid 20th century
size approximately 6ft. 2in. x 9ft. 2in.
\$18,000 - 30,000



1072

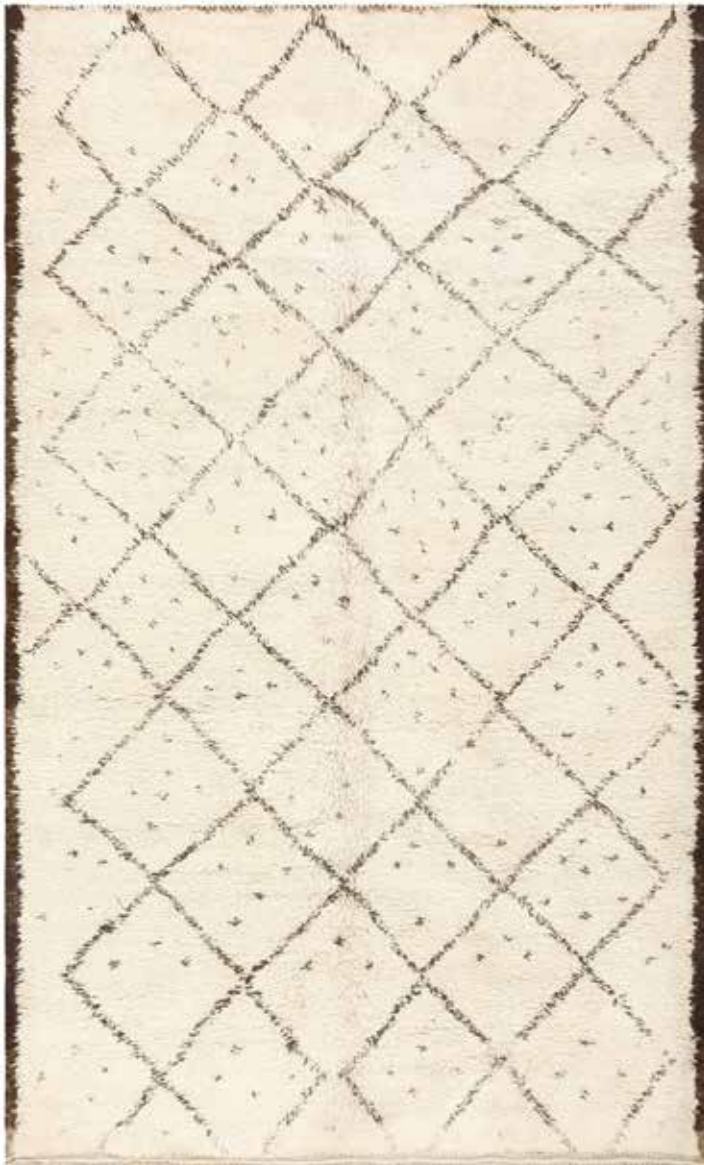
AN ALPUJARRA CARPET

Spain

circa 1940

size approximately 12ft. x 18ft.

\$6,000 - 10,000



1073

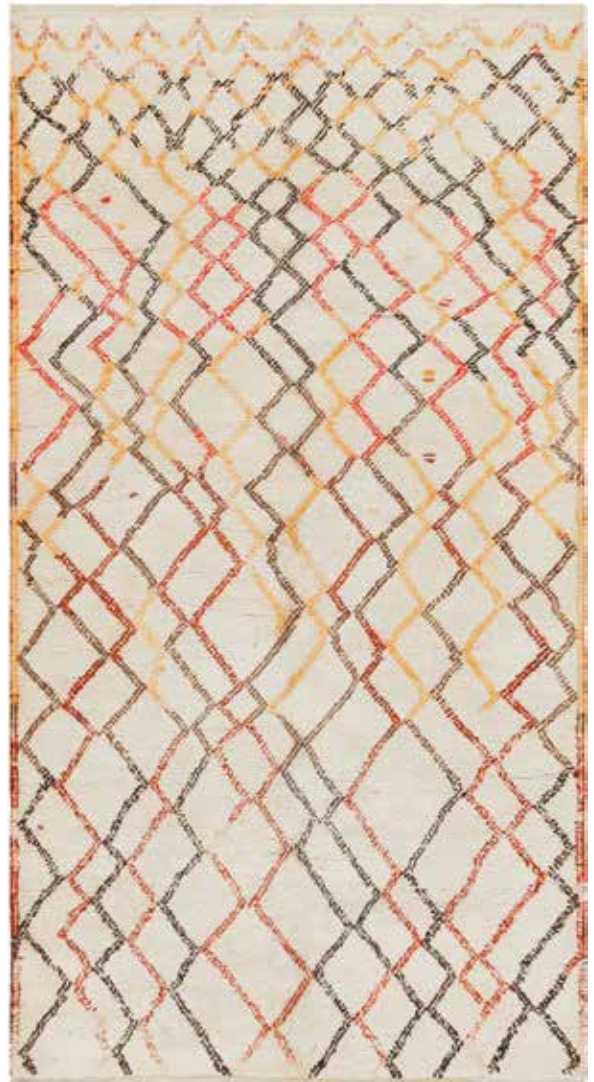
A MOROCCAN CARPET

Morocco

mid 20th century

size approximately 7ft. 2in. x 11ft. 8in.

\$4,000 - 6,000



1074

A MOROCCAN CARPET

Morocco

mid 20th century

size approximately 6ft. 3in. x 11ft.

\$3,000 - 5,000



1075

A MOROCCAN LONG CARPET

Morocco

mid 20th century

size approximately 6ft. x 13ft. 3in.

\$6,000 - 10,000



1076
A MOROCCAN RUG
Morocco
mid 20th century
size approximately 6ft. 5in. x 7ft. 7in.
\$3,000 - 5,000



1077
A MOROCCAN RUG
Morocco
mid 20th century
size approximately 4ft. 5in. x 7ft. 10in.
\$3,000 - 5,000



1078
A MOROCCAN RUG
Morocco
mid 20th century
size approximately 4ft. 5in. x 7ft.
\$2,000 - 4,000



1079
A MOROCCAN CARPET
Morocco
mid 20th century
size approximately 6ft. x 10ft. 3in.
\$4,000 - 6,000



1080

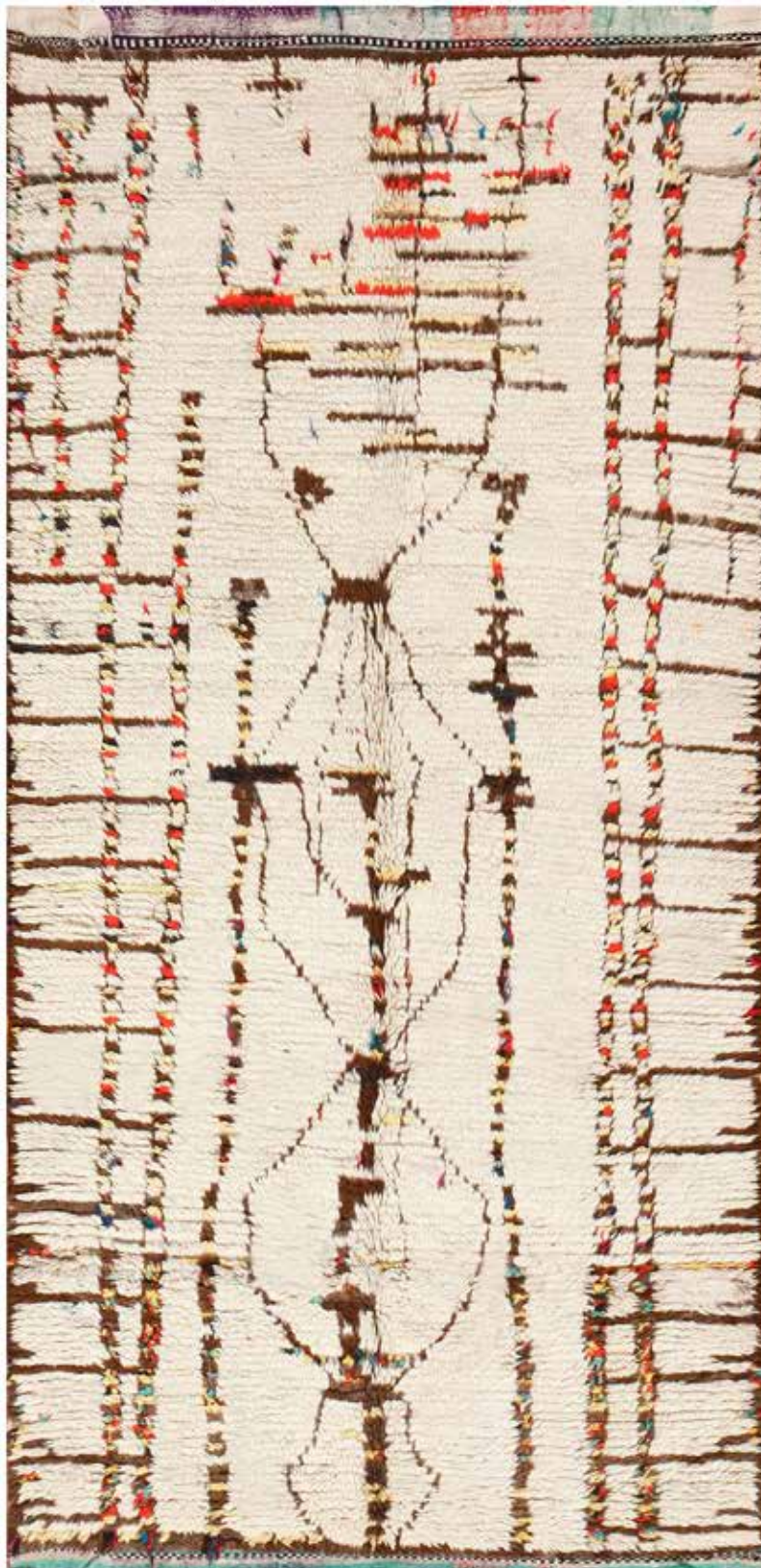
A SWEDISH KILIM

Sweden

mid 20th century

size approximately 6ft. 7in. x 9ft. 10in.

\$6,000 - 10,000



1081

A MOROCCAN RUG

Morocco

mid 20th century

size approximately 4ft. 4in. x 8ft. 5in.

\$3,000 - 5,000



1082

A HADJI JALILI TABRIZ CARPET

Northwest Persia

last quarter 19th century

size approximately 16ft. x 25ft. 4in.

\$30,000 - 50,000



1083

A BESSARABIAN KILIM

Romania

mid 19th century

size approximately 9ft. x 12ft.

\$25,000 - 40,000



1084

AN OUSHAK CARPET

West Anatolia

late 20th century

size approximately 10ft. 7in. x 16ft. 8in.

\$20,000 - 30,000



1085

AN OUSHAK CARPET

West Anatolia

circa 1920

size approximately 9ft. 3in. x 11ft. 9in.

\$10,000 - 15,000



1086

A KONYA RUG

Central Turkey

late 19th century

size approximately 5ft. 5in. x 6ft. 1in.

\$20,000 - 35,000

Sold Sotheby's NYC, Feb 16 / 2000 Lot #53



1087

A KHOTAN CARPET

Turkestan

circa 1900

size approximately 11ft. 3in. x 19ft. 6in.

\$40,000 - 60,000



1088

A TABRIZ CARPET

Northwest Persia

circa 1900

size approximately 11ft. 3in. x 17ft.

\$20,000 - 30,000



1089

A TABRIZ CARPET

Northwest Persia

circa 1920

size approximately 9ft. 6in. x 11ft. 6in.

\$15,000 - 25,000



1090

A HADJI JALILI TABRIZ CARPET

Northwest Persia

circa 1900

size approximately 10ft. x 13ft. 9in.

\$20,000 - 30,000



1091

AN OUSHAK CARPET

West Anatolia

circa 1900

size approximately 10ft. x 13ft.

\$12,000 - 20,000



1092

A TABRIZ CARPET

Northwest Persia

circa 1940

size approximately 12ft. 8in. x 18ft. 6in.

\$15,000 - 25,000



1093

A SULTANABAD CARPET

Central Persia

circa 1900

size approximately 12ft. 7in. x 15ft. 6in.

\$25,000 - 35,000



1094

A MOHTASHAM KASHAN CARPET

Central Persia

circa 1900

size approximately 9ft. 2in. x 12ft. 2in.

\$25,000 - 35,000

1095

A MOHTASHAM KASHAN RUNNER

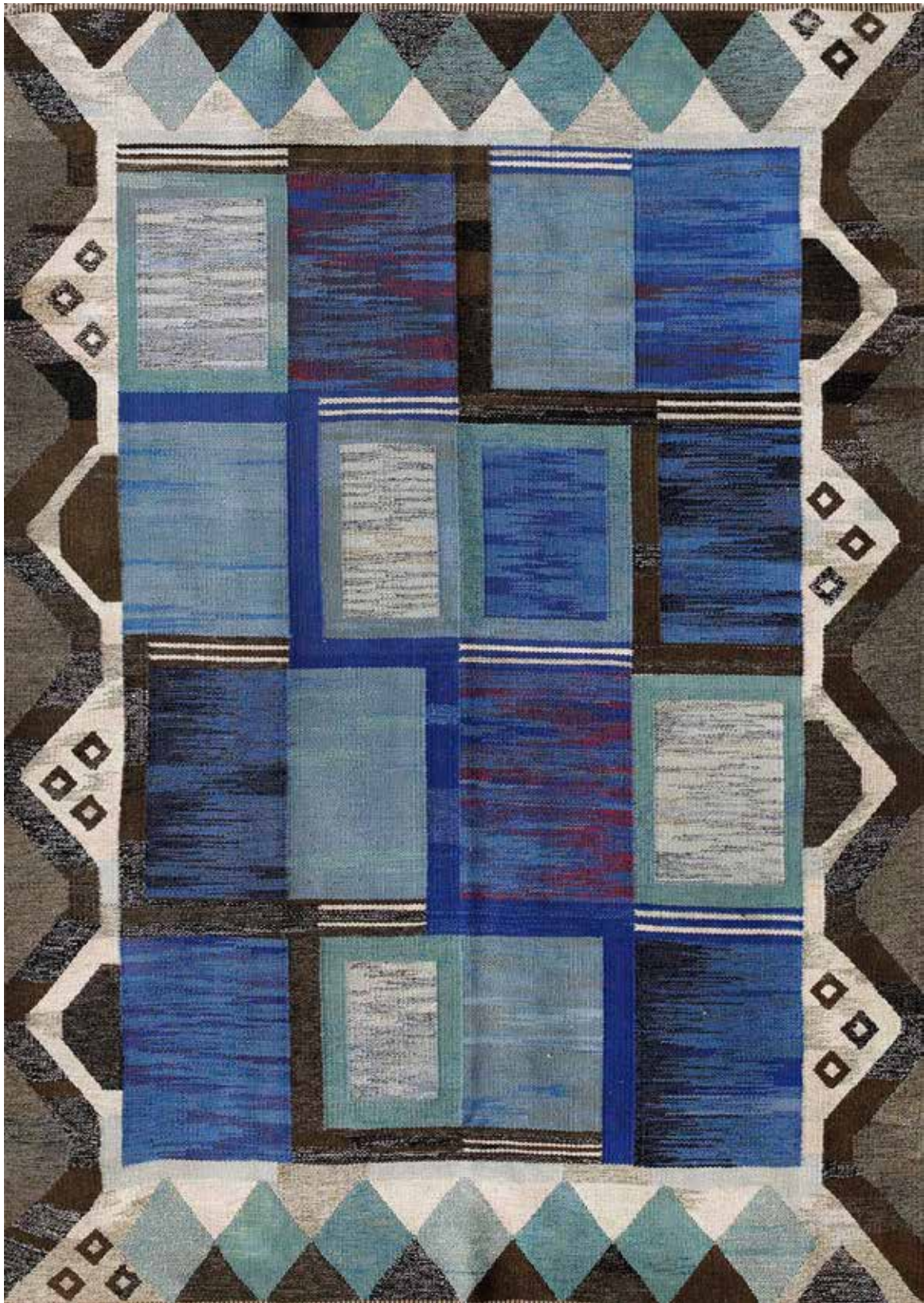
Central Persia

late 19th century

size approximately 3ft. 3in. x 17ft. 9in.

\$20,000 - 30,000





1096

A SWEDISH KILIM

Sweden

mid 20th century

size approximately 5ft. 10in. x 8ft. 3in.

\$10,000 - 15,000



1097

A SWEDISH KILIM BY A. OSTERBERG

Sweden

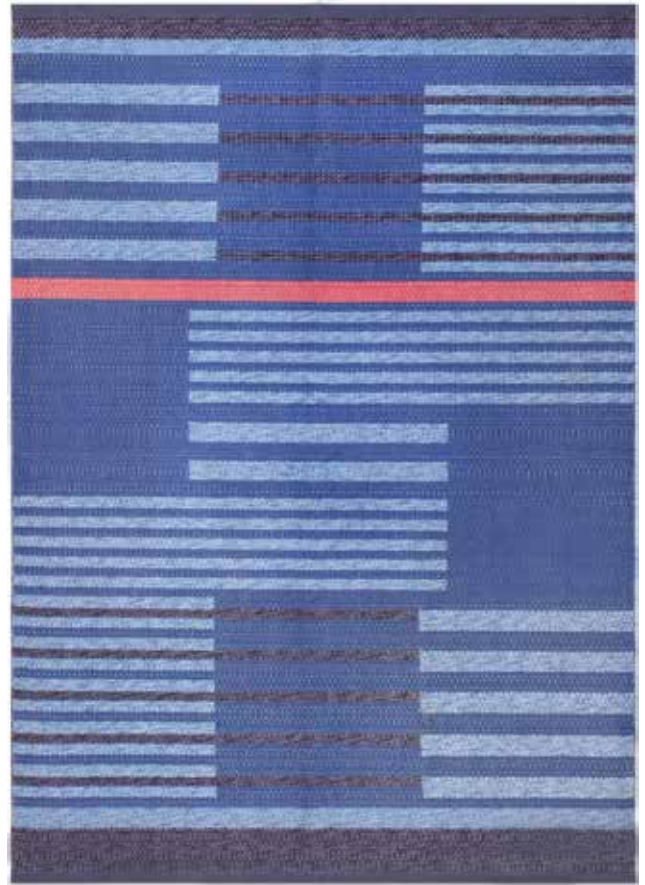
mid 10th century

size approximately 5ft. x 7ft. 1in.

\$7,000 - 12,000



1098
A SWEDISH KILIM BY INGEGERD SIŁOW
Sweden
mid 20th century
size approximately 5ft. 6in. x 7ft. 8in.
\$2,000 - 4,000



1099
A DOUBLE SIDED SWEDISH KILIM
Sweden
mid 20th century
size approximately 5ft. 4in. x 7ft. 7in.
\$3,000 - 5,000



1100

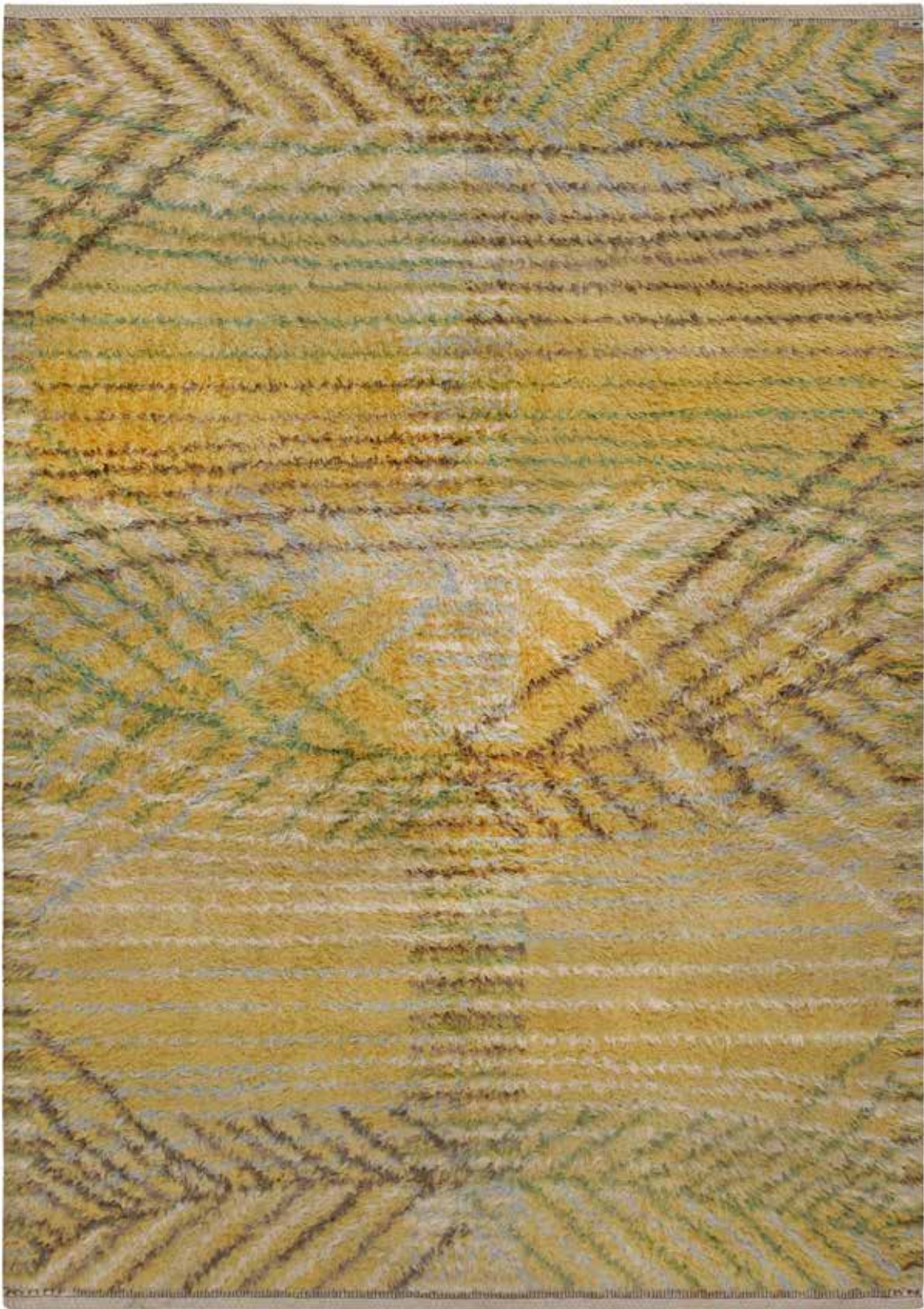
A MARTA MAAS CARPET

Sweden

mid 20th century

size approximately 8ft. 6in. x 11ft. 6in.

\$12,000 - 18,000



1101

A MARTA MAAS RUG

Sweden

mid 20th century

size approximately 5ft. x 7ft.

\$4,000 - 8,000



1102

A MARTA MAAS RUG

Sweden

mid 20th century

size approximately 5ft. 6in. x 7ft. 7in.

\$6,000 - 10,000

1103

A MARTA MAAS CARPET

Sweden

circa 1950

size approximately 6ft. 8in. x 10ft.

\$6,000 - 10,000

Signed in the weave MMF

Marta Maas Fjetterstrom (Märta Måås Fjetterström) was one of the foremost central figures in Mid Century Swedish Woven / Textile Art. She placed high importance on quality and execution of the designs with the idea that one could experience firsthand a vision of nature with each line and every form.

With her vision guiding every single line, choice of colors, patterns and attention to detail it is no wonder why her works are viewed as truly great works of art and treasured by collectors, dealers and private consumers from all four corners of the world.

Marta Maas opened her workshop in 1919 in the beautiful coastal town of Bastad Switzerland and continued running it until her death in 1941 at the age of 68.

Her works can be found in many museums such as: The Victoria & Albert Museum, The Metropolitan Museum of Art, The Louvre, Trondheim's Museum in Norway, The National museum (located in Stockholm), The Röhsska Museum of Design and Decorative Arts in Gothenburg, Nordiska museet (Stockholm) and many others.

Woven in a kilim/ flat weave technique, this idealistic vintage carpet signed by Marta Maas Fjetterstrom, embodies the mid-century zeitgeist with minimalist tiles that use texture and color to develop patterns in an entirely new way.

Limited colors, patterns and motifs produce a harmonious and refined design that makes this mid-century Swedish wonder a beautiful testament to the principle of less is more.





1104

A MARTA MAAS TAPESTRY

Sweden

mid 20th century

size approximately 6ft. 6in. x 9ft. 10in.

\$15,000 - 20,000



1105
A ROUND CORNEILLE RUG
Sweden
mid 20th century
size approximately 7ft. 2in. x 7ft. 2in.
\$5,000 - 8,000

1106

A CORNEILLE RUG

Sweden

mid 20th century

size approximately 6ft. 7in. x 6ft. 10in.

\$5,000 - 8,000

Signed Corneille (Born Guillaume Cornelis - 1922-2010)

The Dutch painter Corneille, born Guillaume Cornelis van Beverloo, was at the forefront of the avant-garde movement in postwar Europe. Corneille was a poet and multi-disciplinary artist who helped earn recognition and respect for modern art. As a lifelong artist, Corneille had a long and industrious career creating original paintings, sculptures, ceramics, art objects, jewelry and rugs. His boldly colored paintings were frequently adapted into art carpets by the Danish manufacturer EGE Axminster and other firms specializing in art rugs.

His paintings often feature brightly colored birds, animals, voluptuous women and fantastical landscapes decorated with mythical creatures. Corneille took familiar objects and depicted them in a new, abstract manner. His works are displayed in the Cobra Museum in the Netherlands, the Museum of Fine Arts in Boston and the Fine Arts Museums of San Francisco among others. Corneille was influenced by Paul Klee and Joan Miró. However, he identified most with the style of Vincent van Gogh and was laid to rest next to the great artist according to his wishes.





1107

A HADJI JALILI TABRIZ CARPET

Northwest Persia

circa 1890

size approximately 12ft. x 18ft. 3in.

\$25,000 - 35,000



1108

A SULTANABAD CARPET

Central Persia

circa 1900

size approximately 12ft. 8in. x 15ft.

\$20,000 - 30,000



1109

A HEREKKE CARPET

Northwest Turkey

circa 1900

size approximately 11ft. 7in. x 11ft. 7in.

\$15,000 - 25,000



1110

AN OUSHAK CARPET

West Anatolia

circa 1900

size approximately 9ft. x 12ft.

\$10,000 - 15,000

1111

A SILK KASHAN JUDAICA RUG

Central Persia

late 19th century

size approximately 4ft. 4in. x 6ft. 9in.

\$30,000 - 50,000

Woven in Kashan, this exceptionally rare silk rug is an outstanding example of Judaic carpet weaving traditions in Persia. This piece features an impressive number of people and animals placed in a natural setting based on Biblical locations and events. Historically, Moses has been an important religious figure who is featured throughout ecclesiastic works along with the Ten Commandments.

Twelve compartments featuring the symbols and inscriptions for each of the Twelve Tribes of Israel decorate the upper portion of the field. Woven with an exceptional level of detail, this traditional Judaica rug features expressive faces, dimensional shading and even carefully rendered toenails. Wrap-around borders continue the pictorial narrative using cartouches decorated with separate landscapes, animals and people that tell their own story.

A "sister" carpet of this piece is currently in the care of the Beth Tzedek Museum in Toronto. The rug was commissioned by Nasser e-Din, the Shah of Persia (1846-1896). The carpet was presented by the Shah of Persia to his Jewish doctor, Hakim Nour Mahmood. The gift was to honor the fact that Mahmood survived an attempted assassination by his envious colleagues.





1112

A SILK SOUF KASHAN CARPET

Central Persia

circa 1900

size approximately 7ft. x 10ft.

\$25,000 - 35,000



1113

A SENNEH WEAVE SERAPI CARPET

Northwest Persia

late 19th century

size approximately 9ft. 9in. x 11ft. 11in.

\$12,000 - 18,000



1114

A SERAPI CARPET

Northwest Persia

late 19th century

size approximately 9ft. 5in. x 9ft. 9in.

\$10,000 - 15,000



1115

A BAKSHAISH CARPET

Northwest Persia

late 19th century

size approximately 13ft. 9in. x 19ft. 7in.

\$20,000 - 30,000



1116

A MUGHAL RUG

India

17th century

size approximately 2ft. 11in. x 3ft. 11in.

\$15,000 - 25,000

Fragment of a larger carpet, from the Jaipur Group, possibly dating to 17th-century Lahore.

A reconstruction of the rug was attempted using existing Kevorkian examples, now located in the Getty Museum in Malibu (see Eiland 1979, no. III).

The floral motifs follow the Mughal style, which, in turn, was inspired by popular European designs. There are 16 floral motifs, which include poppies and hibiscus. A number of rugs featuring this specific floral design were produced in 1635 for the palace of Rajah Jai Singh I, which was located in Amber Fort, the capital of the Indian state of Jaipur. Some labeled examples are dated to the

second half of the 17th century (compare Bennett 1989, p. 186 with respect to Hendley).

In the study by Bennett, certain interpretations for the specially crafted examples are also given. The design arrangement of this Indian carpet, of the Jaipur Group, was derived from similar individual fragments of existing carpets.

Further reading

I. Bennett, Jahan, Jaipur and jonquils: Some Notes on Netherlandish Painting and Indian Carpet Design, in: *The European Fine Art Fair Handbook*, BD.1, Maastricht 1989, pp 185-190.

Indian carpet of Jaipur group in the Getty Museum, Malibu.

From the collection of Eberhart Herrmann
Astaische Teppich-und Textilkunst
 Page 150-151



1117

AN OUSHAK CARPET

West Anatolia

circa 1900

size approximately 12ft. 8in. x 18ft.

\$18,000 - 25,000



1118

AN OUSHAK CARPET

West Anatolia

circa 1900

size approximately 16ft. 9in. x 19ft. 10in.

\$30,000 - 50,000



1119

AN AGRA CARPET

India

late 19th century

size approximately 9ft. 6in. x 13ft.

\$12,000 - 18,000

1120

A KERMAN VASE CARPET

Southeast Persia

mid 17th century

size approximately 11ft. 5in. x 20ft. 2in.

\$300,000 - 500,000

The structure is a variant of Kerman 17th carpets; one way cotton weft and two straight woolen wefts, or, as here, one wool and two cotton. The wool wefts separate two warps into two levels as they run straight through. The cotton wefts bind the warps.

The pattern here is the iconic “vase” carpet design. It features three layer lattice and colorful palmettes, most diagonally placed, in a variety of styles, with a secondary fill of lesser floral sprays and leaves. There are two vases toward one end of the field. Unlike most examples, there is a distinct central vertical axis around which the pattern is symmetrically arranged. This is also found in the ex- McMullen carpet, which is now part of the Fogg Museum, Harvard University Cambridge, Mass. (5.10 x 11.11). Although both examples have a navy field. Most “vase” carpets have lac red grounds and far fewer are on double blue, light blue, ivory, green or other colors. A complete dark blue example is now in the Kuwait Museum, Al Salph Collection. Several fragments far earlier dark blue pieces are in the Textile Museum (R, 33.6.5), the Museum fur Islamische Kunst, Berlin I, - 8.72 and in the Victoria and Albert museum 242-1896. A related navy ground fragment is in The Burns Collection, Seattle.

The border displays the classic Kerman “frozen” pattern of rosette, diagonal palmettes and flower sprays, on burnt apricot. The pattern of this piece is particularly stylized and is similar to the red ground fragment which is currently part of the collection in the Baltimore Museum of Art, 59.40; attributed late 17th century.

Further Reading:

MIT Seattle, Carpets of Central Persia, Birmingham and Sheffield, UK 1976.

Christie's London, October 14 2004. The Lady Baillie ‘Vase’ Carpet. Page 70-71.





1121
AN AGRA CARPET
India
late 19th century
size approximately 16ft. 7in. x 20ft. 10in.
\$25,000 - 35,000



1122

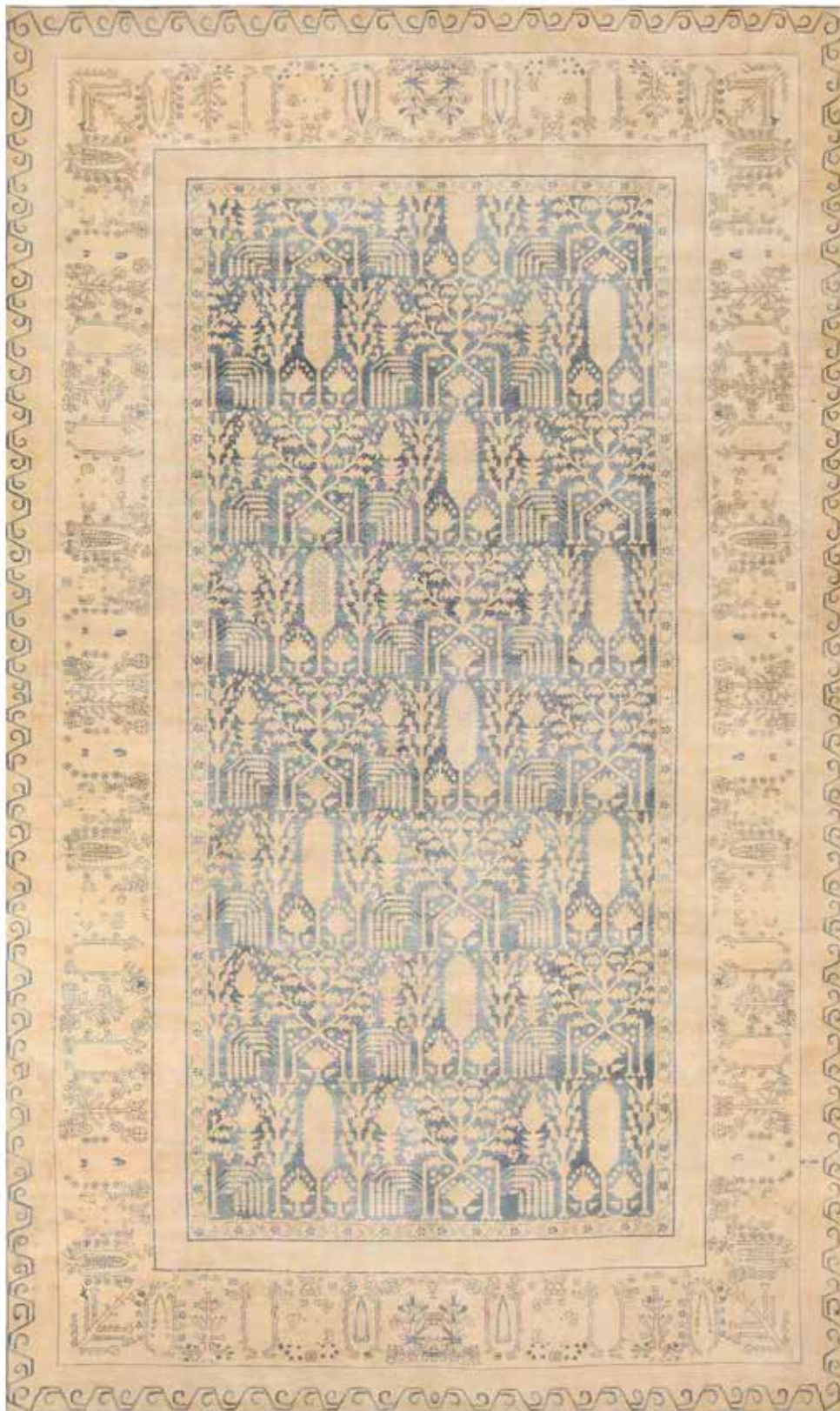
A FIRST EMPIRE AUBUSSON CARPET

France

early 19th century

size approximately 15ft. 4in. x 16ft. 8in.

\$10,000 - 15,000



1123

AN INDIAN CARPET

India

early 20th century

size approximately 10ft. 10in. x 18ft. 6in.

\$10,000 - 15,000



1124

AN OUSHAK CARPET

West Anatolia

late 19th century

size approximately 16ft. 10in. x 22ft.

\$50,000 - 80,000



1125

A HALVAI BIDJAR CARPET

Northwest Persia

late 19th century

size approximately 11ft. 7in. x 17ft. 2in.

\$20,000 - 30,000



(reverse)

1126

A DOUBLE SIDED METAL SOUF KASHAN RUG

Central Persia

late 19th century

size approximately 4ft. 4in. x 6ft. 8in.

\$10,000 - 20,000



1127

A BAKSHAISH RUG

Northwest Persia

late 19th century

size approximately 7ft. x 7ft.

\$10,000 - 15,000



1128

A BAKSHAISH CARPET

Northwest Persia

late 19th century

size approximately 6ft. 6in. x 11ft. 6in.

\$20,000 - 30,000



1129

A KERMAN LONG CARPET

South Central Persia

late 19th century

size approximately 16ft. 5in. x 29ft. 6in.

\$15,000 - 25,000



1130

AN OUSHAK CARPET

West Anatolia

circa 1900

size approximately 11ft. 9in. x 14ft. 9in.

\$10,000 - 15,000

1131

AN OUSHAK CARPET

West Anatolia

circa 1700

size approximately 14ft. x 25ft.

\$50,000 - 80,000

Oushak in western Turkey, has been a carpet weaving center since the late 15th Century, making it the longest continuous rug producing city anywhere. The medallion Oushak carpets in particular, were first woven in the 16th Century under influences from Persian medallion designed rug. This continued through the 17th and 18th centuries evolving in drawing and weave, but retaining their individuality.

This carpet, with a "Turkey Red" background and dark blue palmette tracery, centers an early hexagonal medallion and convex fractioned end medallions, with a focus on a quatrefoil created from 4 split arabesques. The four half secondary medallion at the sides have retained their shape, unlike many contemporary examples in which they have become distorted. Originally, the main medallions were circular on an ellipse and pointed at the two ends. Over time, the time the sides flattened out, as seen here.

The palmettes of the brown border are grouped around a central large one; a layout that was first founded in the late 17th Century and thereafter. Earlier pieces employ less formed groupings of elements and still earlier pieces, those of the mid-16th Century, often employ Kufic Elements from the earlier "Holbein" or "Lotto" Oushak rugs.

The foundation is all wool and the Turkish (symmetric) knotting is moderately course. The dye shops of Oushak were able to process large quantities of yarn employing madder exclusively for the red, indigo for the blues and weed for the yellow. Large quantities meant uniform colors and these antique rugs are known for their consistent color palettes and unfading tonalities. The reds, in this rug particularly, have remained vivid after three or four centuries.





1132

AN INDIAN CARPET

India

late 19th century

size approximately 13ft. x 22ft. 5in.

\$15,000 - 25,000



1133

AN AGRA CARPET

India

late 19th century

size approximately 10ft. x 19ft. 4in.

\$12,000 - 18,000



1134

AN ART DECO CARPET

India

circa 1920

size approximately 15ft. 6in. x 19ft. 6in.

\$10,000 - 15,000



1135

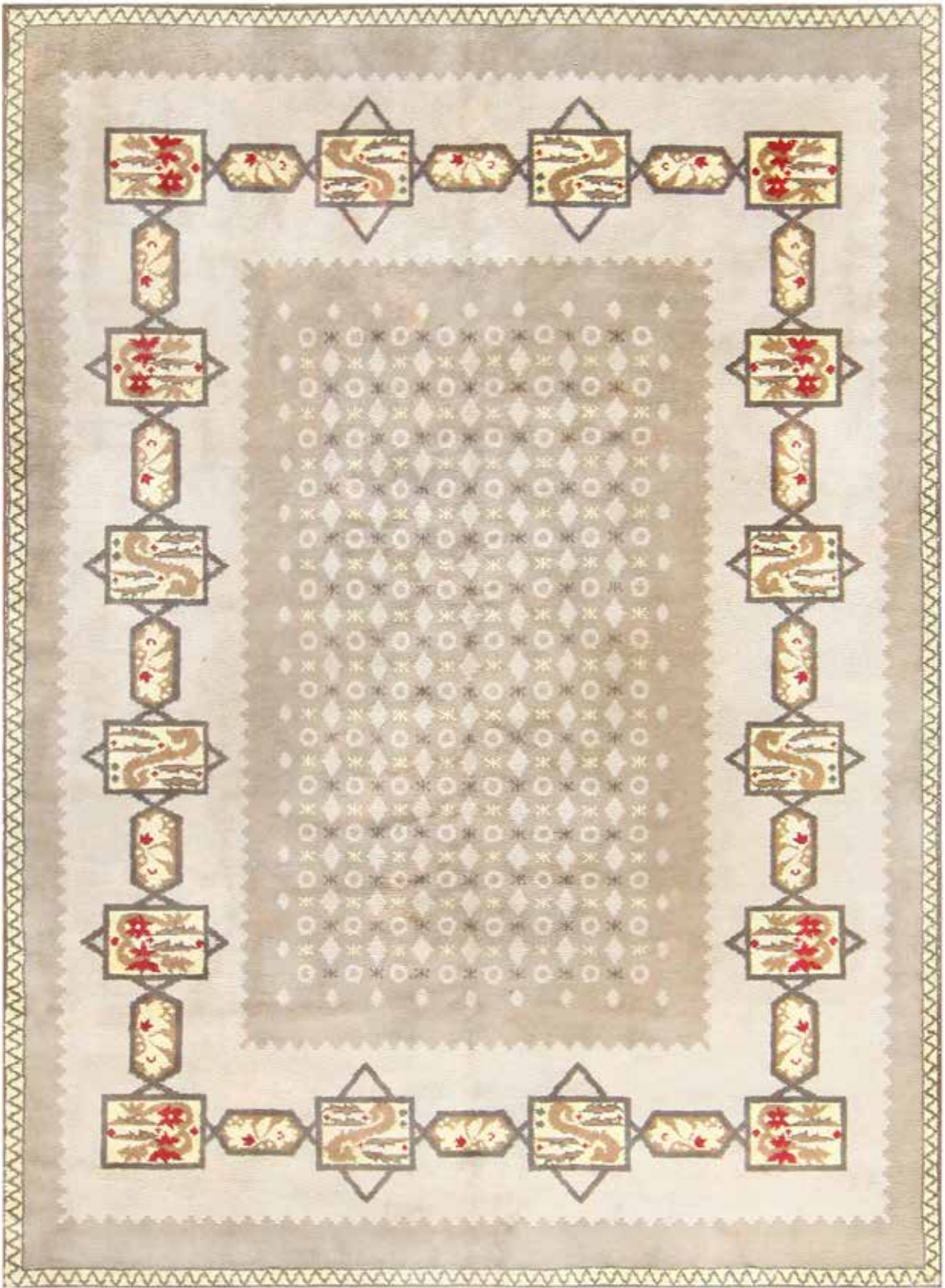
AN OUSHAK CARPET

West Anatolia

circa 1900

size approximately 10ft. 6in. x 13ft. 6in.

\$10,000 - 15,000



1136

AN ART DECO CARPET BY LELEU

France

circa 1940

size approximately 8ft. 6in. x 11ft. 6in.

\$15,000 - 20,000



1137

AN ART DECO CARPET BY LELEU

France

circa 1940

size approximately 8ft. 6in. x 11ft. 6in.

\$15,000 - 20,000

1138

AN ART DECO CARPET BY JOSEF HOFFMANN (1870-1956)

Austria

circa 1920

size approximately 8ft. 1in. x 11ft. 3in.

\$25,000 - 35,000

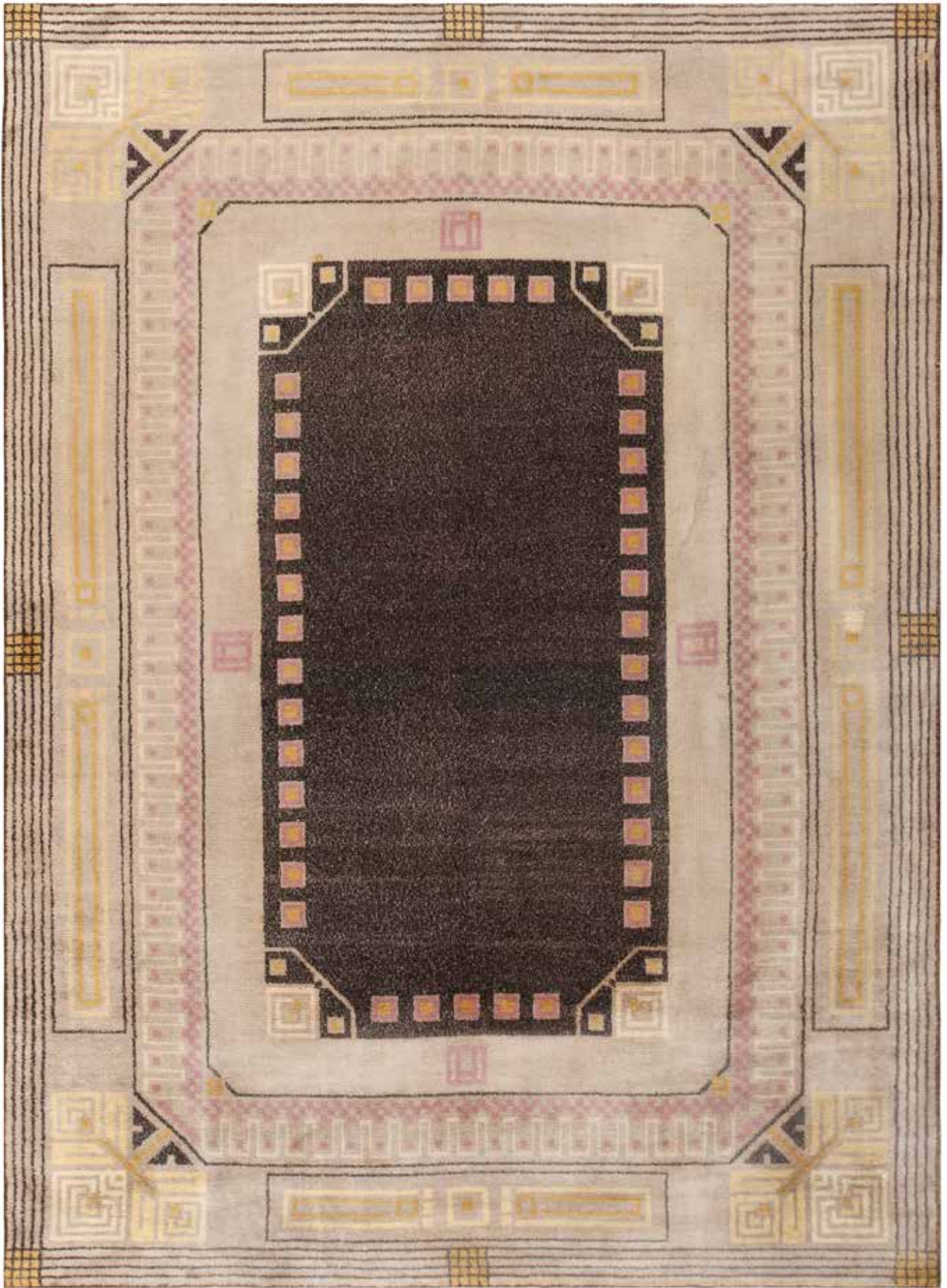
This rug bears the initials of the manufacturer Hoffmann worked with, JBS, standing for J. Backmann Söhne. Hoffmann was a respected European architect and designer during the early 20th century who contributed to a number of aesthetic movements that would shape European design for generations to come.

Born in Moravia in 1870, Hoffmann studied at the Higher State Crafts School beginning in 1887, and went on to study at the Academy of Fine Arts Vienna, graduating in 1895.

As Hoffmann developed his aesthetic, he began to focus almost exclusively on designing beautiful and artisanal household products and contemporary buildings, including the Sanatorium Purkersdorf in Vienna, as well as the Palais Stoclet in Brussels. His work was so well-known and admired that he was asked to act as the Austrian General Commissioner for the Venice Biennale. He was also awarded a position as a member of Austria's Art Senate.

Josef Hoffmann seamlessly transitioned from the Jugendstil style which characterized his earlier years to the increasingly popular Art Deco style that took hold around 1920. While Jugendstil, like Art Nouveau, focused on curving lines and natural motifs, the Art Deco style was characterized by angular lines, sharp geometry and the influence of new technology. Hoffmann was superior in creating Art Deco rugs and carpets that appeared at once modern and timeless. His designs, which include chic, simple patterns, in muted palettes, brought a feeling of elegance to the Art Deco style.

This particular Josef Hoffmann rug is a wonderful example of Hoffmann's eye for color and composition. Rendered in warm charcoal gray and neutral tones with cheerful accents in pink and gold, this carpet exudes the rhythm and refinement that the Art Deco style became known for. Reminiscent of famed Art Deco structures like the Empire State Building and Radio City Music Hall, Hoffmann's experience as an architect is beautifully captured in this wonderful rug.





1139

A SERAPI CARPET

Northwest Persia

circa 1920

size approximately 12ft. x 15ft.

\$12,000 - 18,000



1140

AN ART DECO CARPET

China

circa 1920

size approximately 8ft. 10in. x 11ft. 6in.

\$15,000 - 20,000



1141

AN ART DECO CARPET

China

circa 1920

size approximately 9ft. x 11ft. 8in.

\$12,000 - 18,000



1142

AN OUSHAK CARPET

West Anatolia

circa 1900

size approximately 10ft. 6in. x 12ft. 11in.

\$10,000 - 15,000

1143

AN ART DECO CARPET BY JACQUES EMILE RUHLMANN

France

circa 1920

size approximately 14ft. x 15ft. 7in.

\$30,000 - 50,000

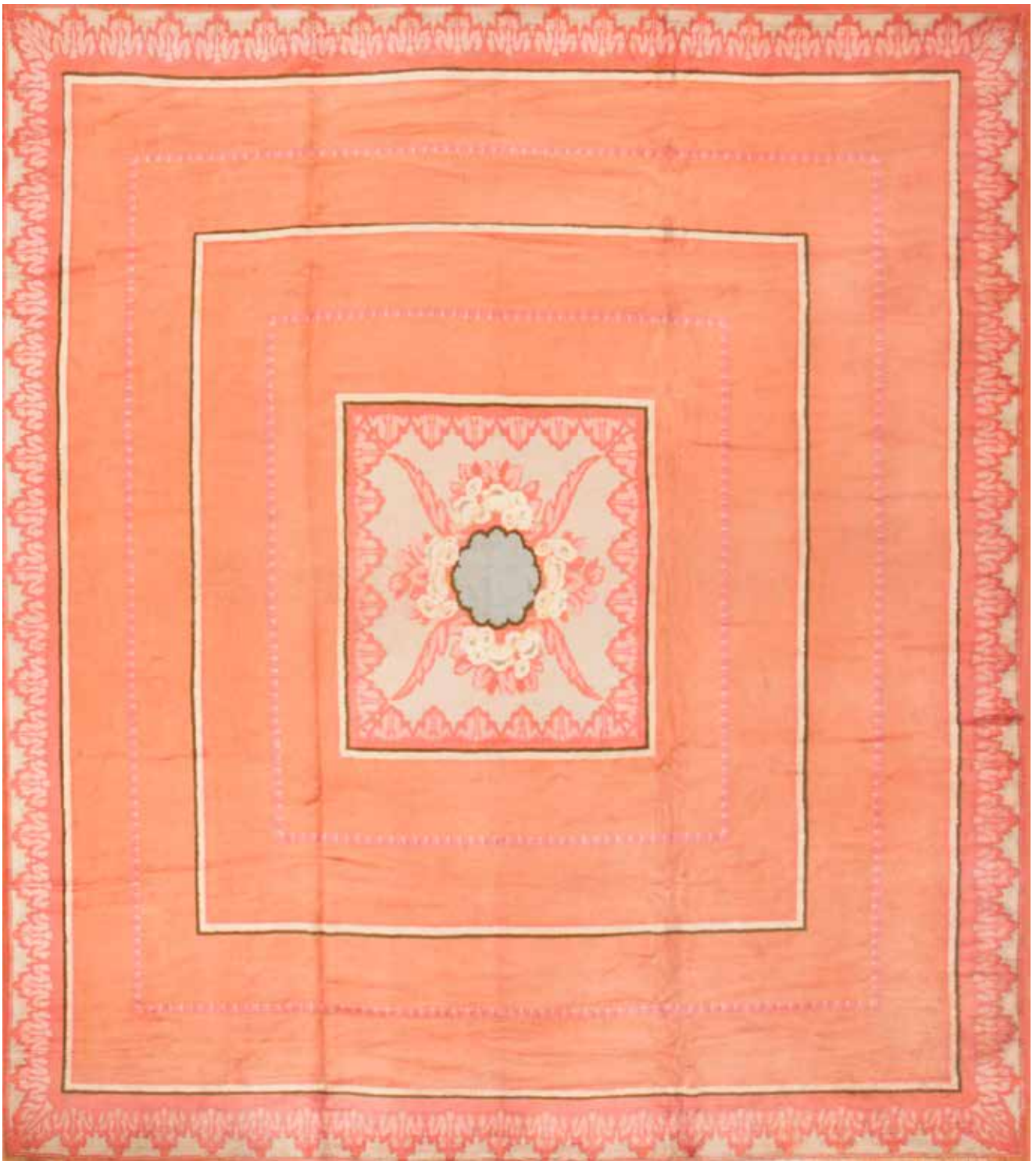
Emile Jacques Ruhlmann (1879-1933), born in Paris, France, was an inspiring forerunner to the Art Deco style. He began making furniture in 1910, developing a luxurious and elegant style based on the tastefully embellished and classic proportions of neoclassical designs. In 1919 he opened a design firm with Pierre Laurent, Ruhlmann Et Laurent, which featured wall paper, furniture, light fixtures and rugs.

His Pavilion d'un Collectionneur at the Exposition Internationale des Arts Décoratifs et Industriels Modernes in 1925 featured an entire room that showcased his impeccably crafted works. His use of exotic woods, ivory and metal accents, high-quality craftsmanship and subtle contours of form gives a timeless distinction to his pieces.

This French art deco Ruhlmann rug is characterized primarily by its deceptively simple composition.

The concentric rectangular design is both reminiscent of, and distinctly separate from, the more traditional Oriental carpet designs that are prominently seen in the market today. Rather than featuring a series of borders, a field and a central medallion, this piece, instead, features a greatly deconstructed version of that traditional arraignment, with its open stretches of solid color standing in the place of richly detailed fields and borders.

Even the "medallion" is something of a deconstruction, appearing almost as the image of a medallion rather than a true medallion.





1144

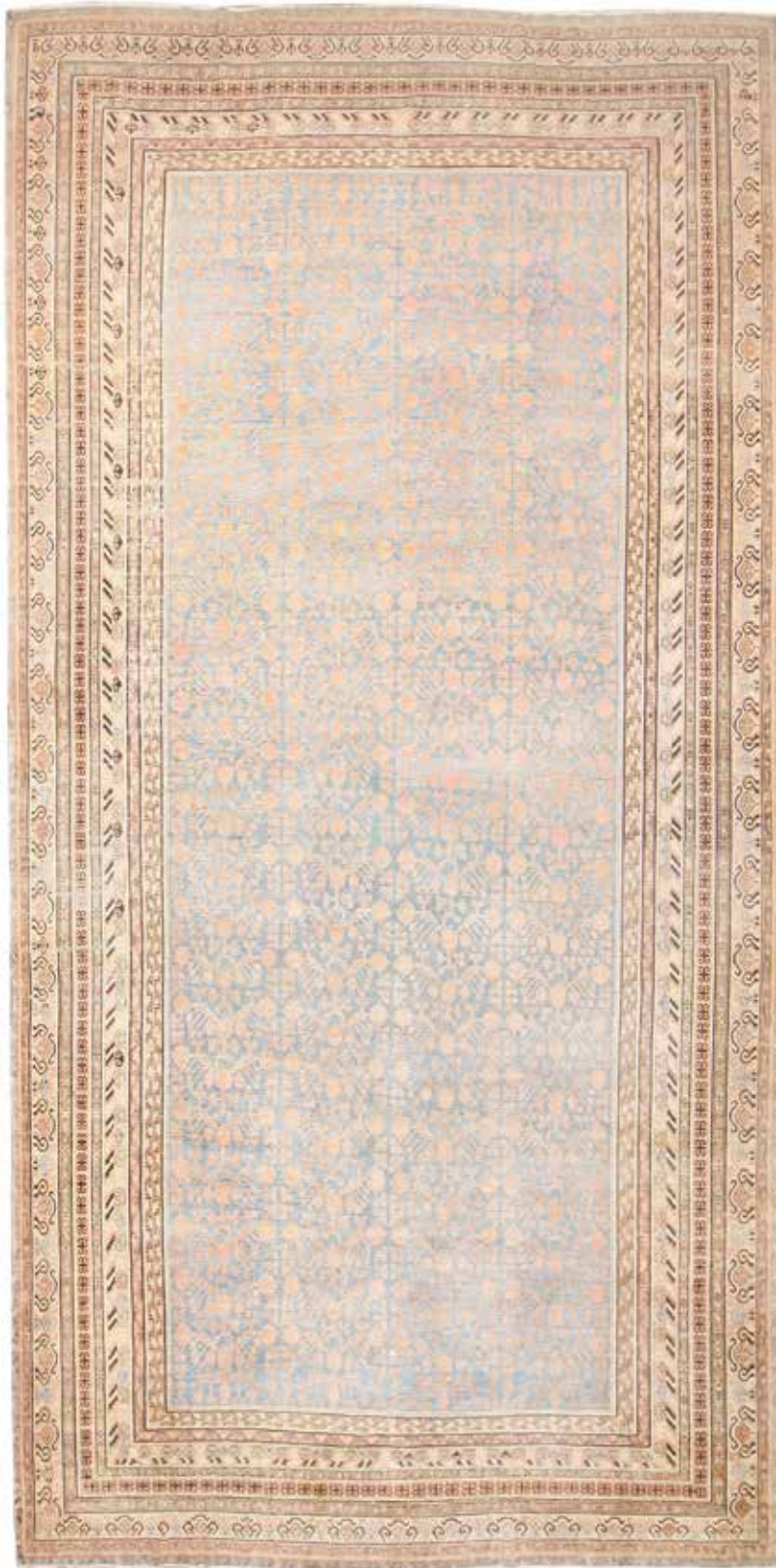
A ZEIGLER SULTANABAD CARPET

Central Persia

circa 1900

size approximately 13ft. x 17ft. 7in.

\$50,000 - 80,000



1145

A KHOTAN LONG CARPET

East Turkestan

circa 1920

size approximately 10ft. 9in. x 21ft. 8in.

\$15,000 - 25,000



1146

A MOHTASHAM KASHAN CARPET

Central Persia

late 19th century

size approximately 10ft. 4in. x 14ft.

\$20,000 - 30,000



1147

A MALAYER CARPET

Central Persia

circa 1920

size approximately 11ft. 8in. x 17ft.

\$10,000 - 15,000



1148

A KHORASAN CARPET

Northeast Persia

circa 1910

size approximately 10ft. x 15ft. 3in.

\$15,000 - 25,000



1149

A BAKSHAISH CARPET

Northwest Persia

late 19th century

size approximately 13ft. 6in. x 16ft. 6in.

\$30,000 - 50,000

1150

A ZEIGLER SULTANABAD CARPET

Central Persia

late 19th century

size approximately 12ft. 9in. x 16ft. 7in.

\$80,000 - 120,000

The Ziegler carpet offered here was housed in the dining room of Sigmund Freud's home, 20 Maresfield Gardens, in Hampstead, London. In 1938 the renowned father of psychoanalysis, Sigmund Freud and his family arrived in London as refugees from the Nazis in Vienna. They brought with them all of their possessions, including carpets and rugs, furniture and a collection of his prized antiquities. Here his son Ernst and housekeeper Paula Fichtl recreated for him the same working environment as he had had in Vienna.

Freud bought most of his collections from dealers. His brother-in-law Moritz Freud (same surname), 1857-1920 was a carpet dealer who lived in Berlin. Although there is no proof that Freud purchased his carpets directly from Moritz, it would seem probable that there may have been transactions between them.

Objects in his collection were placed on all surfaces, his carpets and rugs were on the floor, hung on the walls and draped on tables and furniture. Included in this small collection is a now very famous rare Turkoman Asmalyk.

For the last sixteen years of his life, Freud suffered from cancer. Yet, he continued to work in England by maintaining his practice at Maresfield Gardens. After his death in 1939, his wife Martha, their daughter Anna, their housekeeper and his sister-in-law Minna Bernays continued to live in the house. The house remained occupied until the death of Anna Freud in 1982. Following her wishes the house was turned into a museum and opened to the public in 1986.

Christie's London, Oriental Rugs and Carpets. Thursday 3 May 2001.

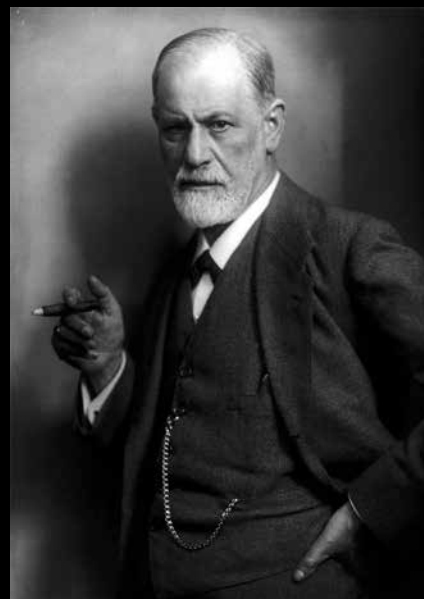
Provenance

Sigmund Freud (1856-1939)

Publications

HALI Vol 33, 1987. Pp.10-112

Cutbill, G: An Obsessive Collector



Sigmund Freud





1151

AN OTTOMAN CAIRENE LONG CARPET

Cairo, Egypt

second half 16th century

size approximately 11ft. 9in. x 21ft. 6in.

\$100,000 - 200,000

In the second half of the 16th century and through the 1st half of the 17th, the carpet workshops in Cairo wove pieces, often very large, for the Turkish and export markets. This example follows the classic field cover design of leafy, curvilinear forms with a superimposed round central medallion and matching quarter circle corners, all on a grass green ground with secondary tones in light scarlet, dark blue, red and ivory.

The S spin and Z ply of the foundation and pile yarn is an Egyptian oddity, opposite to the usual Z spin and S ply of other comparable oriental rugs. It is observed in late antique and early Islamic Coptic and related textiles from Egypt.

The border of lotus palmettes and rosettes bracketed with saz leaves is also classic for this type of carpet. A few of the finest examples (around 200 knots/square inch) have red silk wefts. The structure of this carpet is more frequently encountered within the all wool types.

Provenance

Tryon Palace Museum, New Bern, North Carolina

Mitchell Samuels Collection; French & Company, New York.

Comparable

Hackwood Park Sale, Christie's on the Premises, 21.4.98, lot 1118, with added cintamani in the medallion and corners; 9.3 x 17.1

Christie's London, 21.4.2015, lot. 50, 13.6 x 23.11. New York, Metropolitan Museum of AA, No.107 in Diamond & Mailey, *Oriental Rugs in The Metropolitan Museum of AA*, p.190.

Christie's London 14, 2.2001, lot 84 for a silk wefted example. Halevin Sale.

Further Reading

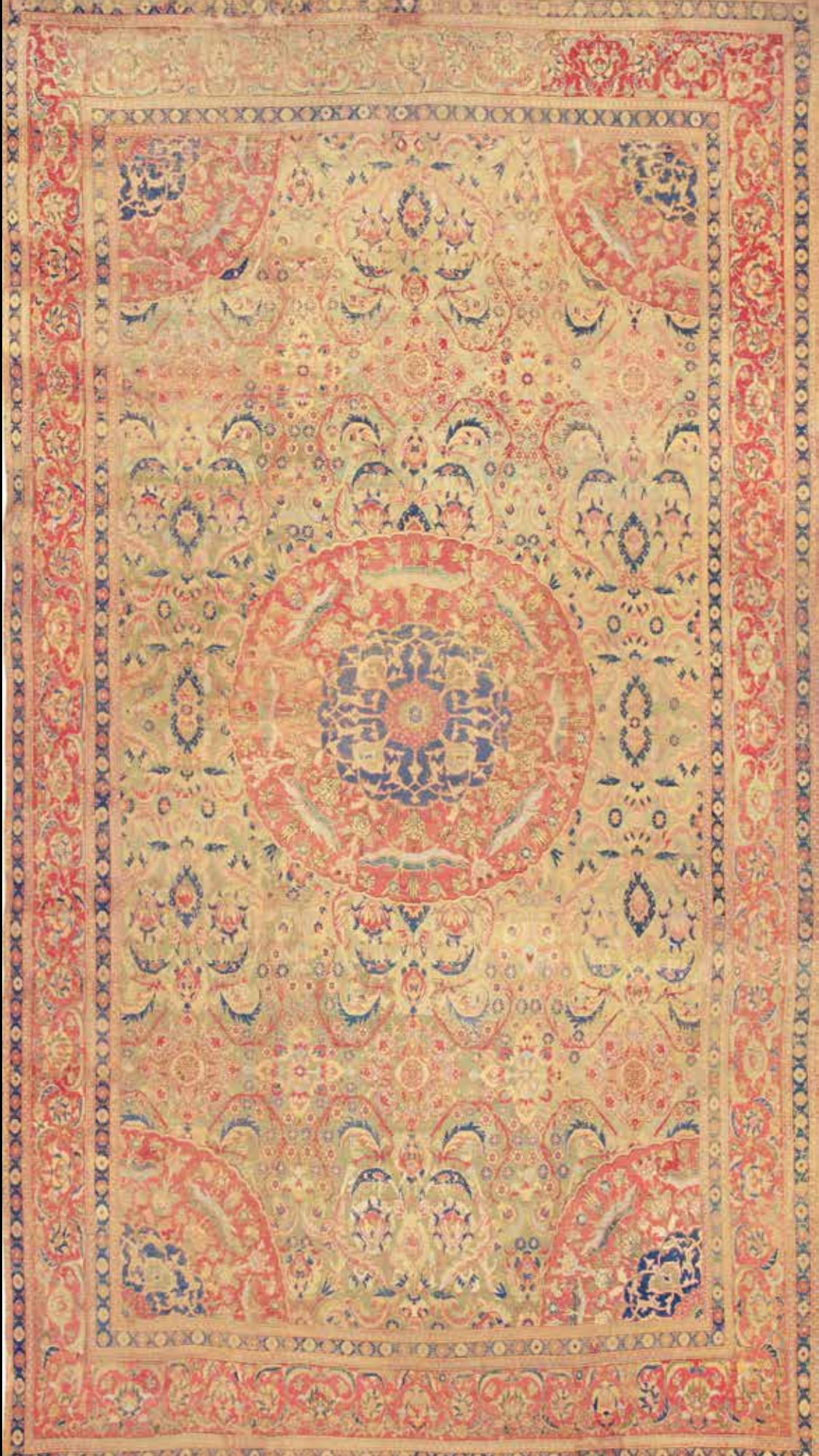
E.Kuhnel & L.Bollinger *Cairene Carpets and Others Technically Related Textile Museum*, Washinton, DC. 1954.

Publications

Arthur Urbane Dilley, *Oriental Rugs and Carpets*, J.B. Lippencott, 1959, Pate XLV.

Walter B. Denny, *Journal of Islamic Art*, Vol. 1, Yale University Press, 1983, pp. 103-122.

Gregor Norman-Wilcox, *Antiques Magazine*, April 1959, pp 366-374. For related examples, see John Kimberly Mumford, *The Yerkes Collection of Oriental Carpets*, The Knapp Company, New York, 1910.





1152

A MOHTASHAM KASHAN CARPET

Central Persia

late 19th century

size approximately 10ft. 8in. x 14ft. 6in.

\$15,000 - 25,000



1153

A KHOTAN CARPET

East Turkestan

18th century

size approximately 6ft. 1in. x 11ft. 6in.

\$10,000 - 15,000



1154

A SULTANABAD CARPET

Central Persia

circa 1920

size approximately 11ft. 4in. x 16ft. 10in.

\$10,000 - 15,000



1155

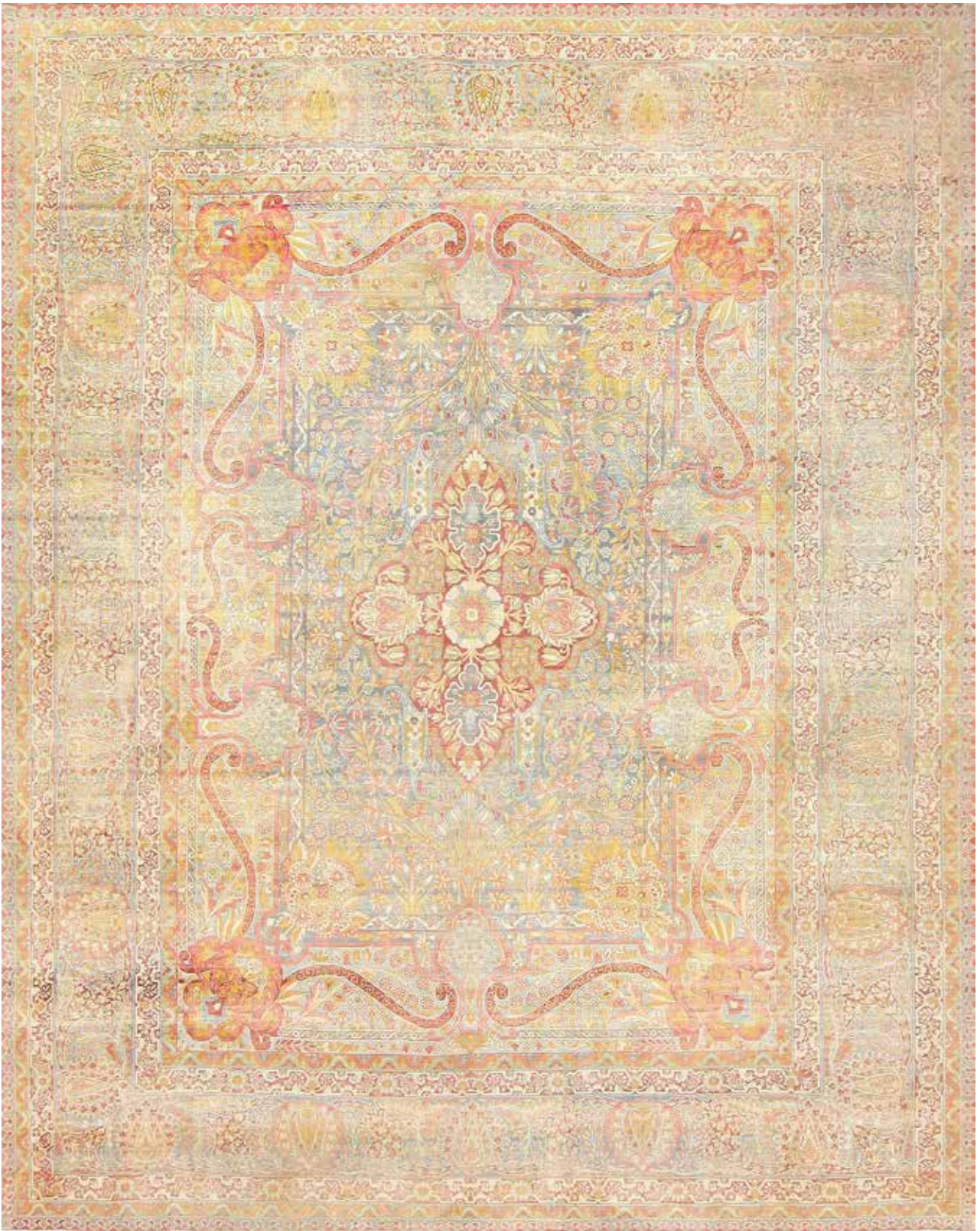
A MOHTASHAM KASHAN CARPET

Central Persia

circa 1900

size approximately 8ft. x 9ft.

\$20,000 - 30,000



1156

A KERMAN CARPET

South Central Persia

circa 1920

size approximately 11ft. 4in. x 14ft. 9in.

\$20,000 - 30,000



1157

AN ART DECO CARPET INSPIRED BY FRANK LLOYD WRIGHT

India

circa 1920

size approximately 12ft. 7in. x 18ft. 7in.

\$70,000 - 100,000

1158

AN ARTS AND CRAFTS DONEGAL CARPET ATTRIBUTED TO GAVIN MORTON

Ireland

circa 1900

size approximately 12ft. 6in. x 17ft. 6in.

\$30,000 - 50,000

This Donegal rug from Ireland, the design of which is attributed to the widely admired Gavin Morton, boasts an absolutely delightful composition, the profound beauty of which is underscored by vibrant colors throughout. An impeccably designed and executed series of borders frame the composition, with green vine scrolls and large, boisterous floral elements standing out brightly against a pale ivory. All of this surrounds a field of a deep and serene blue, the vastness and negative space of which suggests a river. This impression is enhanced by the floral and vine scroll elements that dance throughout the field of this arts and crafts rug, appearing almost as bits of nature fallen from the trees into a running body of water. The oranges, greens and pale reds of the large geometric floral and vine scroll designs contrast against the blue of the field, giving the entire rug the impression of a third dimension.

For carpets with a similar design, please refer to Malcolm Haslam, *Arts & Crafts Carpets*, London, 1991, figs. 67, 68, 69 and 70.





1159

A SULTANABAD CARPET

Central Persia

circa 1900

size approximately 15ft. x 24ft.

\$20,000 - 30,000



1160

A KERMAN CARPET

South Central Persia

circa 1900

size approximately 10ft. 9in. x 20ft.

\$35,000 - 50,000



1161

A KERMAN CARPET

South Central Persia

circa 1900

size approximately 17ft. 3in. x 27ft. 1in.

\$30,000 - 50,000



1162

A KERMAN CARPET

South Central Persia

circa 1910

size approximately 11ft. 8in. x 21ft. 2in.

\$10,000 - 15,000

1163

A SILK AND METAL KASHGAR RUG

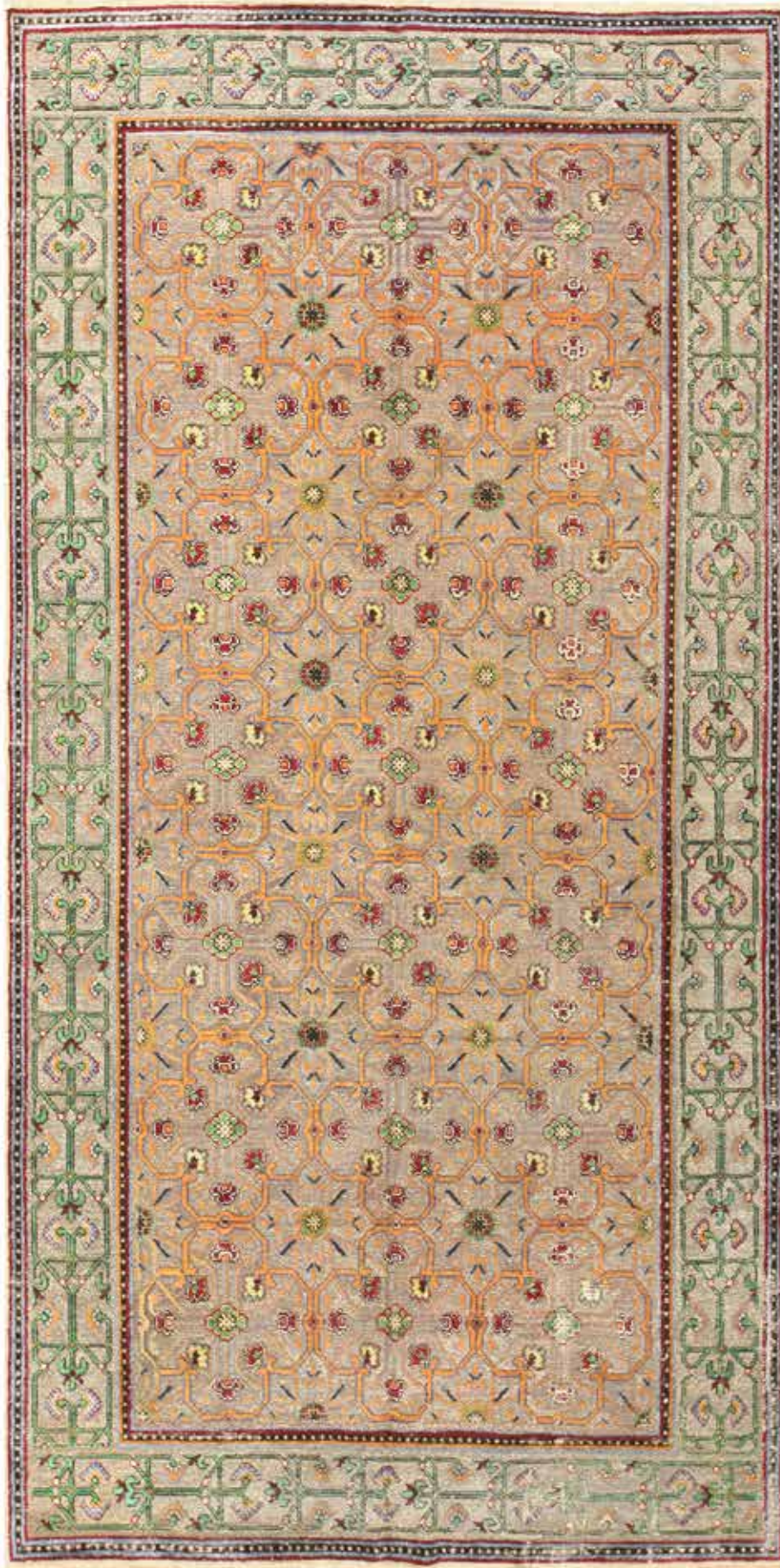
Western China, Xinjiang Province

circa 1920

size approximately 5ft. 2in. x 9ft. 7in.

\$10,000 - 20,000

This antique Kashgar Kang carpet has an overall pattern of lozenge quatrefoils enclosing flower heads. There is a two level arabesque trellis executed in revised silk pile against a ground of soumac brocaded tarnished metal thread. The en suite border has a ground of tarnished gilt metal thread. The foundation is all cotton and the knotting is asymmetric.





1164

A SILK YARKAND RUG

East Turkestan

18th century

size approximately 3ft. 7in. x 8ft. 11in.

\$12,000 - 18,000



1165

A KARABAGH CARPET

Caucasus

late 19th century

size approximately 8ft. 1in. x 11ft. 9in.

\$10,000 - 15,000



1166

A SERAPI CARPET

Northwest Persia

late 19th century

size approximately 10ft. 10in. x 14ft. 5in.

\$10,000 - 15,000



1167

A KHORASAN CARPET

Northeast Persia

circa 1920

size approximately 11ft. 3in. x 18ft.

\$15,000 - 20,000

END OF SALE

INDEX

1022.....	2ft. x 2ft. 8in.	1052.....	7ft. 7in. x 10ft.	1090.....	10ft. x 13ft. 9in.
1063.....	2ft. 2in. x 3ft.	1058.....	8ft. x 10ft.	1146.....	10ft. 4in. x 14ft.
1116.....	2ft. 11in. x 3ft. 11in.	1112.....	7ft. x 10ft.	1040.....	7ft. 2in. x 14ft. 2in.
1056.....	1ft. 8in. x 3ft. 9in.	1020.....	6ft. 9in. x 10ft.	1166.....	10ft. 1in. x 14ft. 5in.
1038.....	3ft. 4in. x 4ft. 1in.	1103.....	6ft. 8in. x 10ft.	1152.....	10ft. 8in. x 14ft. 6in.
1007.....	4ft. 6in. x 4ft. 6in.	1002.....	8ft. 8in. x 10ft. 1in.	1156.....	11ft. 4in. x 14ft. 9in.
1047.....	3ft. 4in. x 4ft. 7in.	1001.....	7ft. 1in. x 10ft. 2in.	1130.....	11ft. 9in. x 14ft. 9in.
1065.....	3ft. 6in. x 5ft. 4in.	1079.....	6ft. x 10ft. 3in.	1034.....	12t. 2in. x 15ft.
1062.....	3ft. 7in. x 5ft. 7in.	1064.....	9ft. 9in. x 10ft. 5in.	1139.....	12ft. x 15ft.
1033.....	5ft. 7in. x 5ft. 8in.	1006.....	8ft. 4in. x 10ft. 8in.	1108.....	12ft. 8in. x 15ft.
1051.....	3ft. 7in. x 6ft.	1061.....	4ft. 3in. x 6ft. 9in.	1148.....	10ft. x 15ft. 3in.
1055.....	4ft. x 6ft.	1074.....	6ft. 3in. x 11ft.	1039.....	12ft. x 15ft. 4in.
1045.....	5ft. 3in. x 6ft.	1019.....	8ft. 8in. x 11ft.	1067.....	10ft. 5in. x 15ft. 5in.
1086.....	5ft. 5in. x 6ft. 1in.	1016.....	9ft. 6in. x 11ft.	1093.....	12ft. 7in. x 15ft. 6in.
1106.....	6ft. 7in. x 6ft. 1in.	1113.....	9ft. 9in. x 11ft. 11in.	1143.....	14ft. x 15ft. 7in.
1049.....	3ft. 1in. x 6ft. 2in.	1138.....	8ft. 1in. x 11ft. 3in.	1018.....	3ft. 5in. x 15ft. 7in.
1050.....	5ft. 2in. x 6ft. 4in.	1054.....	8ft. 6in. x 11ft. 5in.	1154.....	11ft. 4in. x 16ft. 1in.
1057.....	5ft. x 6ft. 6in.	1017.....	8ft. 7in. x 11ft. 5in.	1149.....	13ft. 6in. x 16ft. 6in.
1021.....	4ft. 5in. x 6ft. 6in.	1140.....	8ft. 1in. x 11ft. 6in.	1150.....	12ft. 9in. x 16ft. 7in.
1032.....	5ft. x 6ft. 7in.	1153.....	6ft. 1in. x 11ft. 6in.	1122.....	15ft. 4in. x 16ft. 8in.
1029.....	4ft. x 6ft. 7in.	1136.....	8ft. 6in. x 11ft. 6in.	1084.....	10ft. 7in. x 16ft. 8in.
1126.....	4ft. 4in. x 6ft. 8in.	1137.....	8ft. 6in. x 11ft. 6in.	1147.....	11ft. 8in. x 17ft.
1129.....	4ft. 4in. x 6ft. 9in.	1128.....	6ft. 6in. x 11ft. 6in.	1088.....	11ft. 3in. x 17ft.
1003.....	4ft. 6in. x 6ft. 9in.	1011.....	8ft. 6in. x 11ft. 6in.	1125.....	11ft. 7in. x 17ft. 2in.
1059.....	5ft. x 7ft.	1089.....	9ft. 6in. x 11ft. 6in.	1046.....	10ft. 3in. x 17ft. 4in.
1035.....	4ft. x 7ft.	1100.....	8ft. 6in. x 11ft. 6in.	1158.....	12ft. 6in. x 17ft. 6in.
1078.....	4ft. 5in. x 7ft.	1109.....	11ft. 7in. x 11ft. 7in.	1144.....	13ft. x 17ft. 7in.
1127.....	7ft. x 7ft.	1141.....	9ft. x 11ft. 8in.	1095.....	3ft. 3in. x 17ft. 9in.
1044.....	4ft. 8in. x 7ft.	1073.....	7ft. 2in. x 11ft. 8in.	1167.....	11ft. 3in. x 18ft.
1010.....	4ft. 4in. x 7ft.	1165.....	8ft. 1in. x 11ft. 9in.	1072.....	12ft. x 18ft.
1101.....	5ft. x 7ft.	1085.....	9ft. 3in. x 11ft. 9in.	1117.....	12ft. 8in. x 18ft.
1023.....	4ft. 5in. x 7ft. 1in.	1036.....	8ft. 5in. x 12ft.	1030.....	12ft. 3in. x 18ft. 3in.
1077.....	4ft. 5in. x 7ft. 1in.	1024.....	9ft. 4in. x 12ft.	1107.....	12ft. x 18ft. 3in.
1031.....	4ft. 2in. x 7ft. 1in.	1009.....	9ft. 3in. x 12ft.	1043.....	11ft. 9in. x 18ft. 4in.
1097.....	5ft. x 7ft. 1in.	1027.....	9ft. x 12ft.	1015.....	3ft. 3in. x 18ft. 4in.
1105.....	7ft. 2in. x 7ft. 2in.	1110.....	9ft. x 12ft.	1123.....	10ft. 1in. x 18ft. 6in.
1066.....	5ft. x 7ft. 3in.	1083.....	9ft. x 12ft.	1092.....	12ft. 8in. x 18ft. 6in.
1076.....	6ft. 5in. x 7ft. 7in.	1069.....	8ft. 8in. x 12ft. 1in.	1157.....	12ft. 7in. x 18ft. 7in.
1099.....	5ft. 4in. x 7ft. 7in.	1026.....	9ft. 6in. x 12ft. 11in.	1118.....	16ft. 9in. x 19ft. 1in.
1102.....	5ft. 6in. x 7ft. 7in.	1068.....	3ft. 2in. x 12ft. 11in.	1133.....	10ft. x 19ft. 4in.
1000.....	3ft. 7in. x 7ft. 7in.	1142.....	10ft. 6in. x 12ft. 11in.	1134.....	15ft. 6in. x 19ft. 6in.
1012.....	5ft. 1in. x 7ft. 8in.	1094.....	9ft. 2in. x 12ft. 2in.	1087.....	11ft. 3in. x 19ft. 6in.
1098.....	5ft. 6in. x 7ft. 8in.	1037.....	6ft. 1in. x 12ft. 4in.	1115.....	13ft. 9in. x 19ft. 7in.
1048.....	5ft. x 8ft.	1053.....	9ft. x 12ft. 8in.	1160.....	10ft. 9in. x 20ft.
1164.....	3ft. 7in. x 8ft. 11in.	1004.....	9ft. 6in. x 12ft. 9in.	1121.....	16ft. 7in. x 20ft. 1in.
1096.....	5ft. 1in. x 8ft. 3in.	1119.....	9ft. 6in. x 13ft.	1120.....	11ft. 5in. x 20ft. 2in.
1081.....	4ft. 4in. x 8ft. 5in.	1028.....	8ft. 3in. x 13ft.	1162.....	11ft. 8in. x 21ft. 2in.
1041.....	6ft. 3in. x 8ft. 6in.	1013.....	8ft. x 13ft.	1151.....	11ft. 6in. x 21ft. 6in.
1155.....	8ft. x 9ft.	1091.....	10ft. x 13ft.	1145.....	10ft. 9in. x 21ft. 8in.
1080.....	6ft. 7in. x 9ft. 1in.	1042.....	9ft. 6in. x 13ft. 1in.	1124.....	16ft. 1in. x 22ft.
1104.....	6ft. 6in. x 9ft. 1in.	1014.....	7ft. 2in. x 13ft. 1in.	1132.....	13ft. x 22ft. 5in.
1071.....	6ft. 2in. x 9ft. 2in.	1075.....	6ft. x 13ft. 3in.	1159.....	15ft. x 24ft.
1005.....	7ft. x 9ft. 2in.	1060.....	9ft. 6in. x 13ft.	1131.....	14ft. x 25ft.
1070.....	12ft. x 9ft. 3in.	1025.....	9ft. 1in. x 13ft. 6in.	1082.....	16ft. x 25ft. 4in.
1163.....	5ft. 2in. x 9ft. 7in.	1135.....	10ft. 6in. x 13ft. 6in.	1161.....	17ft. 3in. x 27ft. 1in.
1114.....	9ft. 5in. x 9ft. 9in.	1008.....	11ft. x 13ft. 9in.	1129.....	16ft. 5in. x 29ft. 6in.

Catalog Order Form

Bonhams

Please check the Auction Catalog(s) you would like to receive, complete the address and payment information below and send the completed form via email to catalogs.us@bonhams.com, or via fax at (415) 861 8951, or mail to:

Bonhams
220 San Bruno Avenue
San Francisco, California 94103

If you have any questions please contact us at +1 (800) 223 2854

Category Name	Internal	Domestic Address*	International Address*	Issues per year**
19th CENTURY PAINTINGS (Including Russian and Dogs in Art)	PIC41	<input type="checkbox"/> \$200	<input type="checkbox"/> \$280	5
20TH CENTURY FURNITURE & DECORATIVE ARTS	FRN21	<input type="checkbox"/> \$160	<input type="checkbox"/> \$200	4
AFRICAN, OCEANIC & PRE-COLUMBIAN ART	TRI12	<input type="checkbox"/> \$120	<input type="checkbox"/> \$150	3
AMERICAN & CALIFORNIA WESTERN PAINTINGS & SCULPTURE	PIC40	<input type="checkbox"/> \$200	<input type="checkbox"/> \$250	5
ARMS, ARMOR AND MODERN SPORTING GUNS	ARM10	<input type="checkbox"/> \$80	<input type="checkbox"/> \$100	2
ASIAN WORKS OF ART	ASN10	<input type="checkbox"/> \$360	<input type="checkbox"/> \$430	9
BONHAMS QUARTERLY MAGAZINE	MAGB	<input type="checkbox"/> \$30		4
BOOKS, MANUSCRIPTS & RELATED CATEGORIES	BKS10	<input type="checkbox"/> \$320	<input type="checkbox"/> \$400	8
COINS AND BANKNOTES	CNS10	<input type="checkbox"/> \$160	<input type="checkbox"/> \$200	4
CONTEMPORARY ART (Including Made in California)	PIC50 & PIC52	<input type="checkbox"/> \$200	<input type="checkbox"/> \$250	5
ENTERTAINMENT MEMORABILIA & COLLECTABLES	COL10	<input type="checkbox"/> \$160	<input type="checkbox"/> \$200	4
EUROPEAN & AMERICAN FURNITURE & DECORATIVE ARTS	FRN20	<input type="checkbox"/> \$320	<input type="checkbox"/> \$400	7
IMPRESSIONIST AND MODERN ART	PIC55	<input type="checkbox"/> \$100	<input type="checkbox"/> \$120	2
INDIAN, HIMALAYAN & SOUTHEAST ASIAN ART	ASN12	<input type="checkbox"/> \$80	<input type="checkbox"/> \$100	2
JAPANESE WORKS OF ART	ASN11	<input type="checkbox"/> \$120	<input type="checkbox"/> \$140	3
JEWELRY	JWL10	<input type="checkbox"/> \$320	<input type="checkbox"/> \$400	8
MADE IN CALIFORNIA CONTEMPORARY ART	PIC52	<input type="checkbox"/> \$80	<input type="checkbox"/> \$100	2
MARITIME PAINTINGS AND DECORATIVE ARTS	COL11	<input type="checkbox"/> \$80	<input type="checkbox"/> \$100	2
MOTOR CARS, MOTORCYCLES & AUTOMOBILIA	MOT10 & MOT20	<input type="checkbox"/> \$330	<input type="checkbox"/> \$390	6
MOTORCYCLES	MOT20	<input type="checkbox"/> \$40	<input type="checkbox"/> \$50	1
NATIVE AMERICAN ART	NTV10	<input type="checkbox"/> \$120	<input type="checkbox"/> \$150	3
NATURAL HISTORY, GEMS, MINERALS & LAPIDARY	NAT10	<input type="checkbox"/> \$120	<input type="checkbox"/> \$150	3
ORIENTAL RUGS AND CARPETS	CPT10	<input type="checkbox"/> \$160	<input type="checkbox"/> \$200	3
PHOTOGRAPHS	PIC44	<input type="checkbox"/> \$120	<input type="checkbox"/> \$150	3
PRINTS	PIC43	<input type="checkbox"/> \$120	<input type="checkbox"/> \$150	3
SPACE MEMORABILIA	BKS11	<input type="checkbox"/> \$40	<input type="checkbox"/> \$50	1
WATCHES	JWL11	<input type="checkbox"/> \$120	<input type="checkbox"/> \$150	3
WINES & WHISKY	WIN10	<input type="checkbox"/> \$280	<input type="checkbox"/> \$350	5
WRITING INSTRUMENTS	COL20	<input type="checkbox"/> \$50	<input type="checkbox"/> \$70	2
ALL CATEGORIES	ALLCAT	<input type="checkbox"/> \$4,500	<input type="checkbox"/> \$5,600	112

**The number of auction catalogs and sales listed for a subscription are strictly estimates. We are not responsible for refunds or credits if the number of sales alters from the estimate. Some of the above categories may include our auctions in other locations.

Method of Payment

Check/Money Order enclosed for \$: _____
Payable to Bonhams & Butterfields

Visa Mastercard American Express

Card Number _____ 16-digit Number

Expiration Date ____ / ____ CVV ____

Cardholder Name _____

Address _____

City _____ State __ Zip _____ Country _____

Signature _____ Date _____

Send Catalogs to:

Name _____

Address _____

City _____ State __ Zip _____ Country _____

Telephone _____ Fax _____

E-mail _____

Client Number (internal use only) _____

Auction Registration Form

(Attendee / Absentee / Online / Telephone Bidding)

Please circle your bidding method above.

Bonhams

--	--	--	--

Paddle number (for office use only)

General Notice: This sale will be conducted in accordance with Bonhams Conditions of Sale, and your bidding and buying at the sale will be governed by such terms and conditions. Please read the Conditions of Sale in conjunction with the Buyer's Guide relating to this sale and other published notices and terms relating to bidding. Payment by personal or business check may result in your property not being released until purchase funds clear our bank. Checks must be drawn on a U.S. bank.

Notice to Absentee Bidders: In the table below, please provide details of the lots on which you wish to place bids at least 24 hours prior to the sale. Bids will be rounded down to the nearest increment. Please refer to the Buyer's Guide in the catalog for further information relating to instructions to Bonhams to execute absentee bids on your behalf. Bonhams will endeavor to execute bids on your behalf but will not be liable for any errors or non-executed bids.

Notice to First Time Bidders: New clients are requested to provide photographic proof of ID - passport, driving license, ID card, together with proof of address - utility bill, bank or credit card statement etc. Corporate clients should also provide a copy of their articles of association / company registration documents, together with a letter authorizing the individual to bid on the company's behalf. Failure to provide this may result in your bids not being processed. For higher value lots you may also be asked to provide a bankers reference.

Notice to online bidders; If you have forgotten your username and password for www.bonhams.com, please contact Client Services.

If successful

- I will collect the purchases myself
- Please contact me with a shipping quote (if applicable)
- I will arrange a third party to collect my purchase(s)

Please mail or fax the completed Registration Form and requested information to:

Bonhams Client Services Department
 580 Madison Avenue
 New York, New York 10022
 Tel +1 (212) 644 9001
 Fax +1 (212) 644 9009
 Automated Auction Results
 Tel +1 (415) 503 3410

Sale title:		Sale date:	
Sale no.		Sale venue:	
General Bid Increments: \$10 - 200by 10s \$200 - 500by 20 / 50 / 80s \$500 - 1,000by 50s \$1,000 - 2,000by 100s \$2,000 - 5,000by 200 / 500 / 800s \$5,000 - 10,000by 500s \$10,000 - 20,000by 1,000s \$20,000 - 50,000by 2,000 / 5,000 / 8,000s \$50,000 - 100,000by 5,000s \$100,000 - 200,000by 10,000s above \$200,000at the auctioneer's discretion The auctioneer has discretion to split any bid at any time.			
Customer Number		Title	
First Name		Last Name	
Company name (to be invoiced if applicable)			
Address			
City		County / State	
Post / Zip code		Country	
Telephone mobile		Telephone daytime	
Telephone evening		Fax	
Telephone bidders: indicate primary and secondary contact numbers by writing ① or ② next to the telephone number.			
E-mail (in capitals) _____			
By providing your email address above, you authorize Bonhams to send you marketing materials and news concerning Bonhams and partner organizations. Bonhams does not sell or trade email addresses.			
I am registering to bid as a private client <input type="checkbox"/>		I am registering to bid as a trade client <input type="checkbox"/>	
Resale: please enter your resale license number here _____ We may contact you for additional information.			

SHIPPING
Shipping Address (if different than above): Address: _____ Country: _____ City: _____ Post/ZIP code: _____

Please note that all telephone calls are recorded.

Type of bid (A-Absentee, T-Telephone)	Lot no.	Brief description (In the event of any discrepancy, lot number and not lot description will govern.) If you are bidding online there is no need to complete this section.	MAX bid in US\$ (excluding premium and applicable tax) Emergency bid for telephone bidders only*

You instruct us to execute each absentee bid up to the corresponding bid amount indicated above.

* Emergency Bid: A maximum bid (exclusive of Buyer's Premium and tax) to be executed by Bonhams only if we are unable to contact you by telephone or should the connection be lost during bidding.

BY SIGNING THIS FORM YOU AGREE THAT YOU HAVE READ AND UNDERSTAND OUR CONDITIONS OF SALE AND SHALL BE LEGALLY BOUND BY THEM, AND YOU AGREE TO PAY THE BUYER'S PREMIUM, ANY APPLICABLE TAXES, AND ANY OTHER CHARGES MENTIONED IN THE BUYER'S GUIDE OR CONDITIONS OF SALE. THIS AFFECTS YOUR LEGAL RIGHTS.

Your signature:	Date:
-----------------	-------

CONDITIONS OF SALE

The following Conditions of Sale, as amended by any published or posted notices or verbal announcements during the sale, constitute the entire terms and conditions on which property listed in the catalog shall be offered for sale or sold by Bonhams & Butterfields Auctioneers Corp. and any consignor of such property for whom we act as agent. If live online bidding is available for the subject auction, additional terms and conditions of sale relating to online bidding will apply; see www.bonhams.com/WebTerms for the supplemental terms. As used herein, "Bonhams," "we" and "us" refer to Bonhams & Butterfields Auctioneers Corp.

1. As used herein, the term "bid price" means the price at which a lot is successfully knocked down to the purchaser. The term "purchase price" means the aggregate of (a) the bid price, (b) a PREMIUM retained by us and payable by the purchaser EQUAL TO 25% OF THE FIRST \$100,000 OF THE BID PRICE, 20% OF THE AMOUNT OF THE BID PRICE ABOVE \$100,000 UP TO AND INCLUDING \$2,000,000, AND 12% OF THE AMOUNT OF THE BID PRICE OVER \$2,000,000, and (c) unless the purchaser is exempt by law from the payment thereof, any California, Arizona, Colorado, Connecticut, Florida, Georgia, Illinois, Massachusetts, Nevada, New York, Pennsylvania, Texas, Washington, D.C., Washington state, or other state or local sales tax (or compensating use tax) and other applicable taxes.

2. On the fall of the auctioneer's hammer, the highest bidder shall have purchased the offered lot in accordance and subject to compliance with all of the conditions set forth herein and (a) assumes full risk and responsibility therefor, (b) if requested will sign a confirmation of purchase, and (c) will pay the purchase price in full or such part as we may require for all lots purchased. No lot may be transferred. Any person placing a bid as agent on behalf of another (whether or not such person has disclosed that fact or the identity of the principal) may be jointly and severally liable with the principal under any contract resulting from the acceptance of a bid.

Unless otherwise agreed, payment in good funds is due and payable within five (5) business days following the auction sale. Whenever the purchaser pays only a part of the total purchase price for one or more lots purchased, we may apply such payments, in our sole discretion, to the lot or lots we choose. Payment will not be deemed made in full until we have collected good funds for all amounts due.

Payment for purchases may be made in or by (a) cash, (b) cashier's check or money order, (c) personal check with approved credit drawn on a U.S. bank, (d) wire transfer or other immediate bank transfer, or (e) Visa, MasterCard, American Express or Discover credit, charge or debit card. A processing fee will be assessed on any returned checks. Please note that the amount of cash notes and cash equivalents that can be accepted from a given purchaser may be limited.

The purchaser grants us a security interest in the property, and we may retain as collateral security for the purchaser's obligations to us, any property and all monies held or received by us for the account of the purchaser, in our possession. We retain all rights of a secured party under the California Commercial Code. If the foregoing conditions or any other applicable conditions herein are not complied with, in addition to other remedies available to us and the consignor by law, including without limitation, the right to hold the purchaser liable for the purchase price, we at our option may either (a) cancel the sale, retaining as liquidated damages all payments made by the purchaser or (b) resell the property, either publicly or privately, and in such event the purchaser shall be liable for

the payment of any deficiency plus all costs and expenses of both sales, our commission at our standard rates, all other charges due hereunder, attorneys' fees, expenses and incidental damages. In addition, where two or more amounts are owed in respect of different transactions by the purchaser to us, to Bonhams 1793 Limited and/or to any of our other affiliates, subsidiaries or parent companies worldwide within the Bonhams Group, we reserve the right to apply any monies paid in respect of a transaction to discharge any amount owed by the purchaser. If all fees, commissions, premiums, bid price and other sums due to us from the purchaser are not paid promptly as provided in these Conditions of Sale, we reserve the right to impose a finance charge equal to 1.5% per month on all amounts due to us beginning on the 31st day following the sale until payment is received, in addition to other remedies available to us by law.

3. We reserve the right to withdraw any property and to divide and combine lots at any time before such property's auction. Unless otherwise announced by the auctioneer at the time of sale, all bids are per lot as numbered in the catalog and no lots shall be divided or combined for sale.

4. We reserve the right to reject a bid from any bidder, to split any bidding increment, and to advance the bidding in any manner the auctioneer may decide. In the event of any dispute between bidders, or in the event the auctioneer doubts the validity of any bid, the auctioneer shall have sole and final discretion either to determine the successful bidder or to re-offer and resell the article in dispute. If any dispute arises after the sale, our sales records shall be conclusive in all respects.

5. If we are prevented by fire, theft or any other reason whatsoever from delivering any property to the purchaser or a sale otherwise cannot be completed, our liability shall be limited to the sum actually paid therefor by the purchaser and shall in no event include any compensatory, incidental or consequential damages.

6. If a lot is offered subject to a reserve, we may implement such reserve by bidding on behalf of the consignor, whether by opening bidding or continuing bidding in response to other bidders until reaching the reserve. If we have an interest in an offered lot and the proceeds therefrom other than our commissions, we may bid therefor to protect such interest. **CONSIGNORS ARE NOT ALLOWED TO BID ON THEIR OWN ITEMS.**

7. All statements contained in the catalog or in any bill of sale, condition report, invoice or elsewhere as to authorship, period, culture, source, origin, measurement, quality, rarity, provenance, importance, exhibition and literature of historical relevance, or physical condition **ARE QUALIFIED STATEMENTS OF OPINION AND NOT REPRESENTATIONS OR WARRANTIES.** No employee or agent of Bonhams is authorized to make on our behalf or on that of the consignor any representation or warranty, oral or written, with respect to any property.

8. All purchased property shall be removed from the premises at which the sale is conducted by the date(s) and time(s) set forth in the "Buyer's Guide" portion of the catalog. If not so removed, daily storage fees will be payable to us by the purchaser as set forth therein. We reserve the right to transfer property not so removed to an offsite warehouse at the purchaser's risk and expense, as set forth in more detail in the "Buyer's Guide." Accounts must be settled in full before property will be released. Packing and handling of purchased lots are the responsibility of the purchaser. Bonhams can provide packing and shipping services for certain items as noted in the "Buyer's Guide" section of the catalog.

9. The copyright in the text of the catalog and the photographs, digital images and illustrations of lots in the catalog belong to Bonhams or its licensors. You will not reproduce or permit anyone else to reproduce such text, photographs, digital images or illustrations without our prior written consent.

10. These Conditions of Sale shall bind the successors and assigns of all bidders and purchasers and inure to the benefit of our successors and assigns. No waiver, amendment or modification of the terms hereof (other than posted notices or oral announcements during the sale) shall bind us unless specifically stated in writing and signed by us. If any part of these Conditions of Sale is for any reason invalid or unenforceable, the rest shall remain valid and enforceable.

11. These Conditions of Sale and the purchaser's and our respective rights and obligations hereunder are governed by the laws of the State of California. By bidding at an auction, each purchaser and bidder agrees to be bound by these Conditions of Sale. Any dispute, controversy or claim arising out of or relating to this agreement, or the breach, termination or validity thereof, brought by or against Bonhams (but not including claims brought against the consignor by the purchaser of lots consigned hereunder) shall be resolved by the procedures set forth below.

MEDIATION AND ARBITRATION PROCEDURES

(a) Within 30 days of written notice that there is a dispute, the parties or their authorized and empowered representatives shall meet by telephone and/or in person to mediate their differences. If the parties agree, a mutually acceptable mediator shall be selected and the parties will equally share such mediator's fees. The mediator shall be a retired judge or an attorney familiar with commercial law and trained in or qualified by experience in handling mediations. Any communications made during the mediation process shall not be admissible in any subsequent arbitration, mediation or judicial proceeding. All proceedings and any resolutions thereof shall be confidential, and the terms governing arbitration set forth in paragraph (c) below shall govern.

(b) If mediation does not resolve all disputes between the parties, or in any event no longer than 60 days after receipt of the written notice of dispute referred to above, the parties shall submit the dispute for binding arbitration before a single neutral arbitrator. Such arbitrator shall be a retired judge or an attorney familiar with commercial law and trained in or qualified by experience in handling arbitrations. Such arbitrator shall make all appropriate disclosures required by law. The arbitrator shall be drawn from a panel of a national arbitration service agreed to by the parties, and shall be selected as follows: (i) If the national arbitration service has specific rules or procedures, those rules or procedures shall be followed; (ii) If the national arbitration service does not have rules or procedures for the selection of an arbitrator, the arbitrator shall be an individual jointly agreed to by the parties. If the parties cannot agree on a national arbitration service, the arbitration shall be conducted by the American Arbitration Association, and the arbitrator shall be selected in accordance with the Rules of the American Arbitration Association. The arbitrator's award shall be in writing and shall set forth findings of fact and legal conclusions.

(c) Unless otherwise agreed to by the parties or provided by the published rules of the national arbitration service:

(i) the arbitration shall occur within 60 days following the selection of the arbitrator;

CONDITIONS OF SALE - CONTINUED

(ii) the arbitration shall be conducted in the designated location, as follows: (A) in any case in which the subject auction by Bonhams took place or was scheduled to take place in the State of New York or Connecticut or the Commonwealth of Massachusetts, the arbitration shall take place in New York City, New York; (B) in all other cases, the arbitration shall take place in the city of San Francisco, California; and

(iii) discovery and the procedure for the arbitration shall be as follows:

(A) All arbitration proceedings shall be confidential;

(B) The parties shall submit written briefs to the arbitrator no later than 15 days before the arbitration commences;

(C) Discovery, if any, shall be limited as follows: (I) Requests for no more than 10 categories of documents, to be provided to the requesting party within 14 days of written request therefor; (II) No more than two (2) depositions per party, provided however, the deposition(s) are to be completed within one (1) day; (III) Compliance with the above shall be enforced by the arbitrator in accordance with California law;

(D) Each party shall have no longer than eight (8) hours to present its position. The entire hearing before the arbitrator shall not take longer than three (3) consecutive days;

(E) The award shall be made in writing no more than 30 days following the end of the proceeding. Judgment upon the award rendered by the arbitrator may be entered by any court having jurisdiction thereof.

To the fullest extent permitted by law, and except as required by applicable arbitration rules, each party shall bear its own attorneys' fees and costs in connection with the proceedings and shall share equally the fees and expenses of the arbitrator.

LIMITED RIGHT OF RESCISSION

If within one (1) year from the date of sale, the original purchaser (a) gives written notice to us alleging that the identification of Authorship (as defined below) of such lot as set forth in the **BOLD TYPE** heading of the catalog description of such lot (as amended by any saleroom notices or verbal announcements during the sale) is not substantially correct based on a fair reading of the catalog (including the terms of any glossary contained therein), and (b) within 10 days after such notice returns the lot to us in the same condition as at the time of sale, and (c) establishes the allegation in the notice to our satisfaction (including by providing one or more written opinions by recognized experts in the field, as we may reasonably require), then the sale of such lot will be rescinded and, unless we have already paid to the consignor monies owed him in connection with the sale, the original purchase price will be refunded.

If, prior to receiving such notice from the original purchaser alleging such defect, we have paid the consignor monies owed him in connection with the sale, we shall pay the original purchaser the amount of our commissions, any other sale proceeds to which we are entitled and applicable taxes received from the purchaser on the sale and make demand on the consignor to pay the balance of the original purchase price to the original purchaser. Should the consignor fail to pay such amount promptly, we may disclose the identity of the consignor and assign to the original purchaser our rights against the consignor with respect to the lot the sale of which is sought to be rescinded. Upon such disclosure and assignment, any liability of Bonhams as consignor's agent with respect to said lot shall automatically terminate.

The foregoing limited right of rescission is available to the original purchaser only and may not be assigned to or relied upon by any subsequent transferee of the property sold. The purchaser hereby accepts the benefit of the consignor's warranty of title and other representations and warranties made by the consignor for the purchaser's benefit. Nothing in this section shall be construed as an admission by us of any representation of fact, express or implied, obligation or responsibility with respect to any lot. THE PURCHASER'S SOLE AND EXCLUSIVE REMEDY AGAINST BONHAMS FOR ANY

REASON WHATSOEVER IS THE LIMITED RIGHT OF RESCISSION DESCRIBED IN THIS SECTION.

"Authorship" means only the identity of the creator, the period, culture and source or origin of the lot, as the case may be, as set forth in the **BOLD TYPE** heading of the print catalog entry. The right of rescission does not extend to: (a) works of art executed before 1870 (unless these works are determined to be counterfeits created since 1870), as this is a matter of current scholarly opinion which can change; (b) titles, descriptions, or other identification of offered lots, which information normally appears in lower case type below the **BOLD TYPE** heading identifying the Authorship; (c) Authorship of any lot where it was specifically mentioned that there exists a conflict of specialist or scholarly opinion regarding the Authorship of the lot at the time of sale; (d) Authorship of any lot which as of the date of sale was in accordance with the then generally-accepted opinion of scholars and specialists regarding the same; or (e) the identification of periods or dates of creation in catalog descriptions which may be proven inaccurate by means of scientific processes that are not generally accepted for use until after publication of the catalog in which the property is offered or that were unreasonably expensive or impractical to use at the time of such publication.

LIMITATION OF LIABILITY

EXCEPT AS EXPRESSLY PROVIDED ABOVE, ALL PROPERTY IS SOLD "AS IS." NEITHER BONHAMS NOR THE CONSIGNOR MAKES ANY REPRESENTATION OR WARRANTY, EXPRESS OR IMPLIED, AS TO THE MERCHANTABILITY, FITNESS OR CONDITION OF THE PROPERTY OR AS TO THE CORRECTNESS OF DESCRIPTION, GENUINENESS, ATTRIBUTION, PROVENANCE OR PERIOD OF THE PROPERTY OR AS TO WHETHER THE PURCHASER ACQUIRES ANY COPYRIGHTS OR OTHER INTELLECTUAL PROPERTY RIGHTS IN LOTS SOLD OR AS TO WHETHER A WORK OF ART IS SUBJECT TO THE ARTIST'S MORAL RIGHTS OR OTHER RESIDUAL RIGHTS OF THE ARTIST. THE PURCHASER EXPRESSLY ACKNOWLEDGES AND AGREES THAT IN NO EVENT SHALL BONHAMS BE LIABLE FOR ANY DAMAGES INCLUDING, WITHOUT LIMITATION, ANY COMPENSATORY, INCIDENTAL OR CONSEQUENTIAL DAMAGES.

SELLER'S GUIDE

SELLING AT AUCTION

Bonhams can help you every step of the way when you are ready to sell art, antiques and collectible items at auction. Our regional offices and representatives throughout the US are available to service all of your needs. Should you have any further questions, please visit our website at www.bonhams.com/us for more information or call our Client Services Department at +1 (800) 223 2854 ext. 23550.

AUCTION ESTIMATES

The first step in the auction process is to determine the auction value of your property. Bonhams' world-renowned specialists will evaluate your special items at no charge and in complete confidence. You can obtain an auction estimate in many ways:

- Attend one of our Auction Appraisal Events held regularly at our galleries and in other major metropolitan areas. The updated schedule for Bonhams Auction Appraisal Events is available at www.bonhams.com/us.
- Call our Client Services Department to schedule a private appointment at one of our galleries. If you have a large collection, our specialists can travel, by appointment, to evaluate your property on site.
- Send clear photographs to us of each individual item, including item dimensions and other pertinent information with each picture. Photos should be sent to Bonhams' address in envelopes marked

as "photo auction estimate". Alternatively, you can submit your request using our online form at www.bonhams.com/us. Digital images may be attached to the form. Please limit your images to no more than five (5) per item.

CONSIGNING YOUR PROPERTY

After you receive an estimate, you may consign your property to us for sale in the next appropriate auction. Our staff assists you throughout the process, arranging transportation of your items to our galleries (at the consignor's expense), providing a detailed inventory of your consignment, and reporting the prices realized for each lot. We provide secure storage for your property in our warehouses and all items are insured throughout the auction process. You will receive payment for your property approximately 35 days after completion of sale.

Sales commissions vary with the potential auction value of the property and the particular auction in which the property is offered. Please call us for commission rates.

PROFESSIONAL APPRAISAL SERVICES

Bonhams' specialists conduct insurance and fair market value appraisals for private collectors, corporations, museums, fiduciaries and government entities on a daily basis. Insurance appraisals, used for insurance purposes, reflect the cost of replacing property in today's retail market. Fair market value appraisals are used for estate,

tax and family division purposes and reflect prices paid by a willing buyer to a willing seller.

When we conduct a private appraisal, our specialists will prepare a thorough inventory listing of all your appraised property by category. Valuations, complete descriptions and locations of items are included in the documentation.

Appraisal fees vary according to the nature of the collection, the amount of work involved, the travel distance, and whether the property is subsequently consigned for auction.

Our appraisers are available to help you anywhere and at any time. Please call our Client Services Department to schedule an appraisal.

ESTATE SERVICES

Since 1865, Bonhams has been serving the needs of fiduciaries – lawyers, trust officers, accountants and executors – in the disposition of large and small estates. Our services are specially designed to aid in the efficient appraisal and disposition of fine art, antiques, jewelry, and collectibles. We offer a full range of estate services, ranging from flexible financial terms to tailored accounting for heirs and their agents to world-class marketing and sales support.

For more information or to obtain a detailed Trust and Estates package, please visit our website at www.bonhams.com/us or contact our Client Services Department.

BIDDING & BUYING AT AUCTION

Whether you are an experienced bidder or an enthusiastic novice, auctions provide a stimulating atmosphere unlike any other. Bonhams previews and sales are free and open to the public. As you will find in these directions, bidding and buying at auction is easy and exciting. Should you have any further questions, please visit our website at www.bonhams.com or call our Client Services Department at +1 (800) 223 2854 ext. 3550.

Catalogs

Before each auction we publish illustrated catalogs. Our catalogs provide descriptions and estimated values for each "lot." A lot may refer to a single item or to a group of items auctioned together. The catalogs also include the dates and the times for the previews and auctions. We offer our catalogs by subscription or by single copy. For information on subscribing to our catalogs, you may refer to the subscription form in this catalog, call our Client Services Department, or visit our website at www.bonhams.com/us.

Previews

Auction previews are your chance to inspect each lot prior to the auction. We encourage you to look closely and examine each object on which you may want to bid so that you will know as much as possible about it. Except as expressly set forth in the Conditions of Sale, items are sold "as is" and with all faults; illustrations in our catalogs, website and other materials are provided for identification only. At the previews, our staff is always available to answer your questions and guide you through the auction process. Condition reports may be available upon request.

Estimates

Bonhams catalogs include low and high value estimates for each lot, exclusive of the buyer's premium and tax. The estimates are provided as an approximate guide to current market value based primarily on previous auction results for comparable pieces, and should not be interpreted as a representation or prediction of actual selling prices. They are determined well in advance of a sale and are subject to revision. Please contact us should you have any questions about value estimates.

Reserves

Unless indicated by the ρ symbol next to the lot number, which denotes no reserve, all lots in the catalog are subject to a reserve. The reserve is the minimum auction price that the consignor is willing to accept for a lot. This amount is confidential and does not exceed the low estimate value.

Auction House's Interest in Property Offered at Auction

On occasion, Bonhams may offer property in which it has an ownership interest in whole or in part or otherwise has an economic interest. Such property, if any, is identified in the catalog with a \blacktriangle symbol next to the lot number(s).

Bonhams may also offer property for a consignor that has been guaranteed a minimum price for its property by Bonhams or jointly by Bonhams and a third party. Bonhams and any third parties providing a guarantee may benefit financially if the guaranteed property is sold successfully and may incur a financial loss if its sale is not successful. Such property, if any, is identified in the catalog with a \circ symbol next to the lot number(s).

Bidding at Auction

At Bonhams, you can bid in many ways: in person, via absentee bid, over the phone, or via Bonhams' live online bidding facility. Absentee bids can be submitted in person, online, via fax or via email.

Valid Bonhams client accounts are required to participate in bidding activity. You can obtain registration information online, at the reception desk or by calling our Client Services Department.

By bidding at auction, whether in person or by agent, by absentee bid, telephone, online or other means, the buyer or bidder agrees to be bound by the Conditions of Sale.

Lots are auctioned in consecutive numerical order as they appear in the catalog. Bidding normally begins below the low estimate. The auctioneer will accept bids from interested parties present in the saleroom, from telephone bidders, and from absentee bidders who have left written bids in advance of the sale. The auctioneer may also execute bids on behalf of the consignor by placing responsive or consecutive bids for a lot up to the amount of the reserve, but never above it.

We assume no responsibility for failure to execute bids for any reason whatsoever.

In Person

If you are planning to bid at auction for the first time, you will need to register at the reception desk in order to receive a numbered bid card. To place a bid, hold up your card so that the auctioneer can clearly see it. Decide on the maximum auction price that you wish to pay, exclusive of buyer's premium and tax, and continue bidding until your bid prevails or you reach your limit. If you are the successful bidder on a lot, the auctioneer will acknowledge your paddle number and bid amount.

Absentee Bids

As a service to those wishing to place bids, we may at our discretion accept bids without charge in advance of auction online or in writing on bidding forms available from us. "Buy" bids will not be accepted; all bids must state the highest bid price the bidder is willing to pay. Our auction staff will try to bid just as you would, with the goal of obtaining the item at the lowest bid price possible. In the event identical bids are submitted, the earliest bid submitted will take precedence. Absentee bids shall be executed in competition with other absentee bids, any applicable reserve, and bids from other auction participants. A friend or agent may place bids on your behalf, provided that we have received your written authorization prior to the sale. Absentee bid forms are available in our catalogs, online at www.bonhams.com/us, at offsite auction locations, and at our San Francisco, Los Angeles and New York galleries.

By Telephone

Under special circumstances, we can arrange for you to bid by telephone. To arrange for a telephone bid, please contact our Client Services Department a minimum of 24 hours prior to the sale.

Online

We offer live online bidding for most auctions and accept absentee bids online for all our auctions. Please visit www.bonhams.com/us for details.

Bid Increments

Bonhams generally uses the following increment multiples as bidding progresses:

\$50-200	by \$10s
\$200-500	by \$20/50/80s
\$500-1,000	by \$50s
\$1,000-2,000	by \$100s
\$2,000-5,000	by \$200/500/800s
\$5,000-10,000	by \$500s
\$10,000-20,000	by \$1,000s
\$20,000-50,000	by \$2,000/5,000/8,000s
\$50,000-100,000	by \$5,000s
\$100,000-200,000	by \$10,000s
above \$200,000	at auctioneer's discretion

The auctioneer may split or reject any bid at any time at his or her discretion as outlined in the Conditions of Sale.

Currency Converter

Solely for the convenience of bidders, a currency converter may be provided at Bonhams' auctions. The rates quoted for conversion of other currencies to U.S. Dollars are indications only and should not be relied upon by a bidder, and neither Bonhams nor its agents shall be responsible for any errors or omissions in the operation or accuracy of the currency converter.

Buyer's Premium

A buyer's premium is added to the winning bid price of each individual lot purchased, at the rates set forth in the Conditions of Sale. The winning bid price plus the premium constitute the purchase price for the lot. Applicable sales taxes are computed based on this figure, and the total becomes your final purchase price.

Unless specifically illustrated and noted, fine art frames are not included in the estimate or purchase price. Bonhams accepts no liability for damage or loss to frames during storage or shipment.

All sales are final and subject to the Conditions of Sale found in our catalogs, on our website, and available at the reception desk.

Payment

All buyers are asked to pay and pick up by 3pm on the business day following the auction. Payment may be made to Bonhams by cash, checks drawn on a U.S. bank, money order, wire transfer, or by Visa, MasterCard, American Express or Discover credit or charge card or debit card. All items must be paid for within 5 business days of the sale. Please note that payment by personal or business check may result in property not being released until purchase funds clear our bank. For payments sent by mail, please remit to Cashier Department, 220 San Bruno Avenue, San Francisco, CA 94103.

Sales Tax

California, Arizona, Colorado, Connecticut, Florida, Georgia, Illinois, Nevada, New York, Massachusetts, Pennsylvania, Texas, Washington state and Washington DC residents must pay applicable sales tax. Other state or local taxes (or compensating use taxes) may apply. Sales tax will be automatically added to the invoice unless a valid resale number has been furnished or the property is shipped via common carrier to destinations outside the states listed above.

Shipping & Removal

Bonhams can accommodate shipping for certain items. Please contact our Cashiers Department for more information or to obtain a quote. Carriers are not permitted to deliver to PO boxes.

International buyers are responsible for all import/export customs duties and taxes. An invoice stating the actual purchase price will accompany all international purchases.

Collection of Purchases

Please arrange for the packing and transport of your purchases prior to collection at our office. If you are sending a third party shipper, please request a release form from us and return it to +1 (212) 644 9009 prior to your scheduled pickup. To schedule collection of purchases, please call +1 (212) 644 9001.

Handling and Storage Charges

Please note that our offices have requirements for freight elevator usage. Please contact us to schedule an elevator appointment for pickup of any large or awkward items. Bonhams will hold all purchased lots in our gallery until Friday April 8 without penalty. After April 8 collection of lots will be by appointment only. Please call +1 (212) 644 9001 at least 24 hours in advance to make an appointment.

Storage charges of \$5 per lot, per day will begin accruing for any lots not collected by the 31st day after the auction. Bonhams reserves the right to remove uncollected sold lots to the warehouse of our choice at the buyer's risk and expense. Handling and storage fees will apply.

Auction Results

To find out the final purchase price for any lot following the sale, please call our automated auction results line at +1 (800) 223 2854 ext. 3400. All you need is a touch-tone telephone and the lot number. Auction results are usually available on the next business day following the sale or online at www.bonhams.com/us.



IMPORTANT NOTICE TO BUYERS

COLLECTION & STORAGE AFTER SALE

Please note that all lots that are not collected by **4PM ON FRIDAY, APRIL 8** will be removed to the warehouse of Cadogan Tate Fine Art Storage Limited. Lots not so listed will remain at Bonhams; provided, however, **THAT IF BUYERS OF LISTED LOTS ALSO BUY OTHER NON-LISTED ITEMS, THESE OTHER LOTS WILL ALSO BE REMOVED TO THE WAREHOUSE OF CADOGAN TATE**, so that all lots remain together and buyers can collect their entire purchases from one location. For any questions please refer to the Bonhams department.

LOTS WILL BE AVAILABLE FOR COLLECTION FROM CADOGAN TATE BEGINNING ON WEDNESDAY, APRIL 13.

Address
 Cadogan Tate
 301 Norman Ave
 Brooklyn, NY 11222

Lots will be available for collection 24hrs following transfer to Cadogan Tate every business day from 9.30am to 4.30pm ET.

Collections appointments must be booked 24 hours in advance (subject to full payment of all outstanding amounts due to Bonhams and Cadogan Tate) by contacting Cadogan Tate at +1 (917) 464 4346.

HANDLING & STORAGE CHARGES

Please note: For sold lots removed to Cadogan Tate there will be transfer and insurance charges but no storage charge due for lots collected within 7 days of the transfer date. For sold lots that remain at Bonhams, there will be no storage charge for lots collected within 21 days of the sale date.

The per-lot charges levied by Cadogan Tate Fine Art Storage Ltd are as follows (plus any applicable sales tax):

FURNITURE/LARGE OBJECTS

Transfer \$75
 Daily storage..... \$10
 Insurance (on Hammer + Premium + tax) 0.3%

SMALL OBJECTS

Transfer \$37.50
 Daily storage..... \$5
 Insurance (on Hammer + Premium + tax) 0.3%

Please contact Catherine More at Cadogan Tate Fine Art Storage at
 +1 (917) 464 4346
 +1 (347) 468 9916 (fax)
 c.more@cadogantatefineart.com

For more information and estimates on domestic and International shipping, please contact Catherine More at
 +1 (917) 464 4346 or
 c.more@cadogantatefineart.com

PAYMENT

All amounts due to Bonhams and all charges due to Cadogan Tate Fine Art Storage Ltd must be paid by the time of collection of the property from their warehouse.

TO MAKE PAYMENT IN ADVANCE

Telephone +1 (917) 464 4346 to ascertain the amount due, payable by cash, check, or credit card.

PAYMENT AT TIME OF COLLECTION

May be made by cash, check, or credit card.


Lots will only be released from Cadogan Tate's warehouse upon production of the "Collection Slip" obtained from the Cashier's office at Bonhams.

The removal and/or storage by Cadogan Tate of any lots will be subject to their standard Conditions of Business, copies of which are available at Bonhams.

PLEASE NOTE

Cadogan Tate does not accept liability for damage or loss, due to negligence or otherwise, exceeding the sale price of such goods, or at their option the cost of repairing or replacing the damaged or missing goods.

Cadogan Tate reserves a lien over all goods in their possession for payment of storage and all other charges due them.



1793

Bonhams

580 Madison Avenue
New York, New York 10022

+1 212 644 9001
+1 212 644 9009 (fax)